



**SWEDISH  
GEOLOGICAL**

Geoscientific Consulting Worldwide

**Håkan Tarras-Wahlberg**  
**Technical Director**  
**Swedish Geological**



**SWEDISH  
GEOLOGICAL**

Geoscientific Consulting Worldwide

## Who We Are

**Founded in 1986 as part of the Geological Survey of Sweden**

- **Mining sector development**
- **Environmental Management**
- **Geoscience**

**Projects undertaken in more than 40 countries**

# Mining Sector Development

- Minerals sector policy and legislation development and review
- Modern mining cadastre and mining titles registry systems
- Mining sector restructuring and privatization
- Assessments and support to small scale and artisanal mining sector
- Mining and minerals GIS and database systems
- Institutional strengthening and training



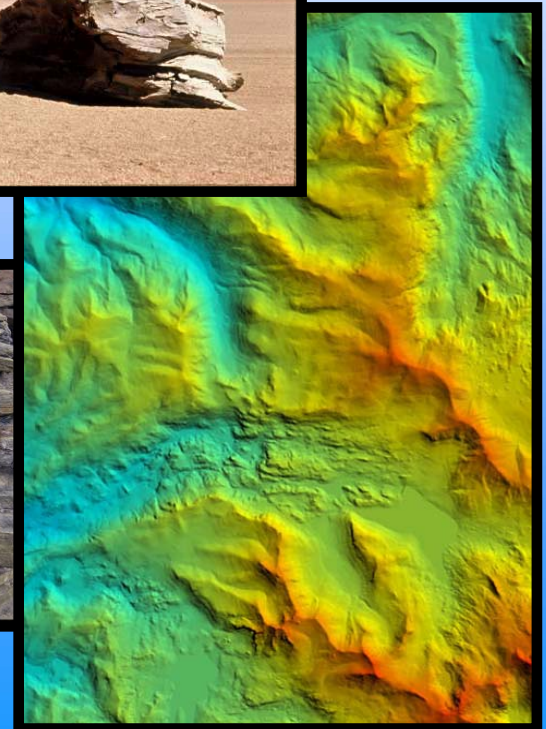
# Environmental Management

- Strategic environmental assessment
- Environmental policy and legislation development and review
- Environmental impact assessment
- Environmental risk assessment
- Environmental management systems development
- Environmental monitoring
- Community health and socio-economics
- Institutional strengthening and training



# Geoscience

- Geological mapping and map production
- Geochemical surveys
- Hydrogeological surveys
- Laboratory services and advice
- Satellite imagery analysis
- Mineralogical investigations
- GIS services and database development
- Institutional strengthening and training

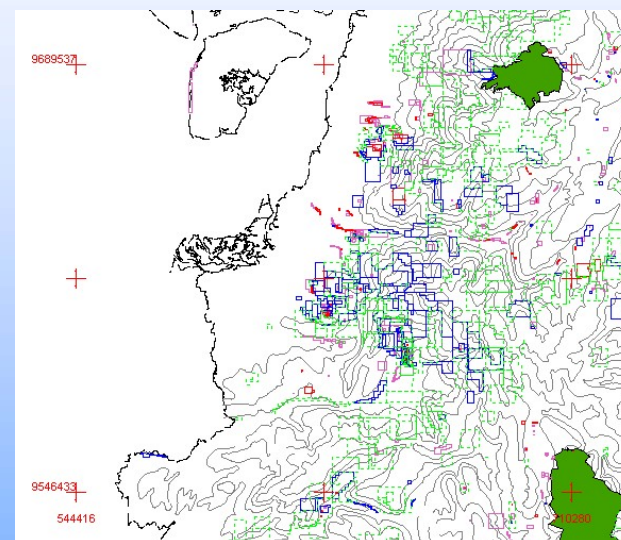


## Recent Project Examples



# Mining Cadastre Projects

Nicaragua, Bolivia, Ecuador  
Custom solutions



Mozambique, Tanzania, Zambia with FlexiCadastre

# FlexiCadastre Advantages

- Flexible
  - Adaptable to different settings, regulations and laws
  - Possible to upgrade
- Sustainable
  - Development team available
  - Multiple users
- Efficient and cost-effective
  - Limited need for custom development
  - Experienced implementation team