

spatial dimension
AN MS GROUP BUSINESS



flexicadastre

SIMPLIFYING WORKFLOWS

TOBY MILLS

SIMPLIFYING WORKFLOWS

- **2 New Tools:**
- **Parameter Values**
- **Decision Actions**

PARAMETER VALUES

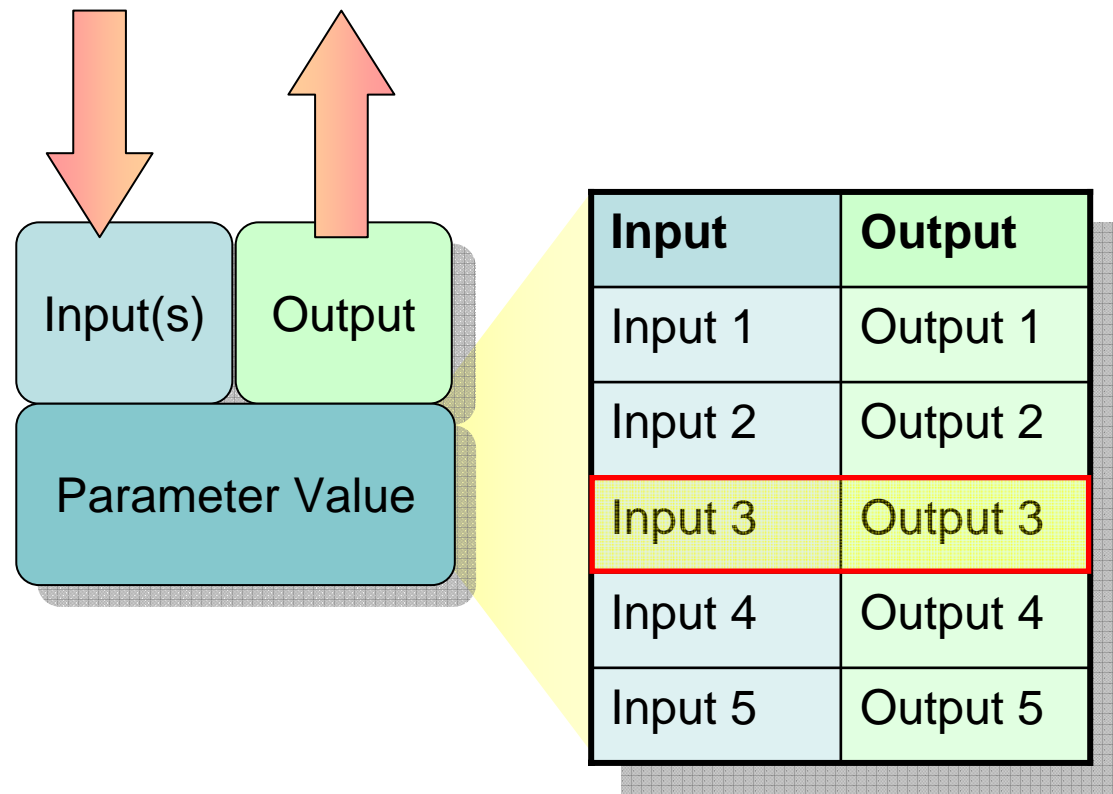
PARAMETER VALUES

Input Types:

- Date
- Map Reference
- License Type
- Company
- Person
- ...

Output Types:

- Number
- String
- Company
- Person
- ...



PARAMETER VALUES

- Used by Business Rules
- Scheduling Payments
- Allows for variations within a single Rule

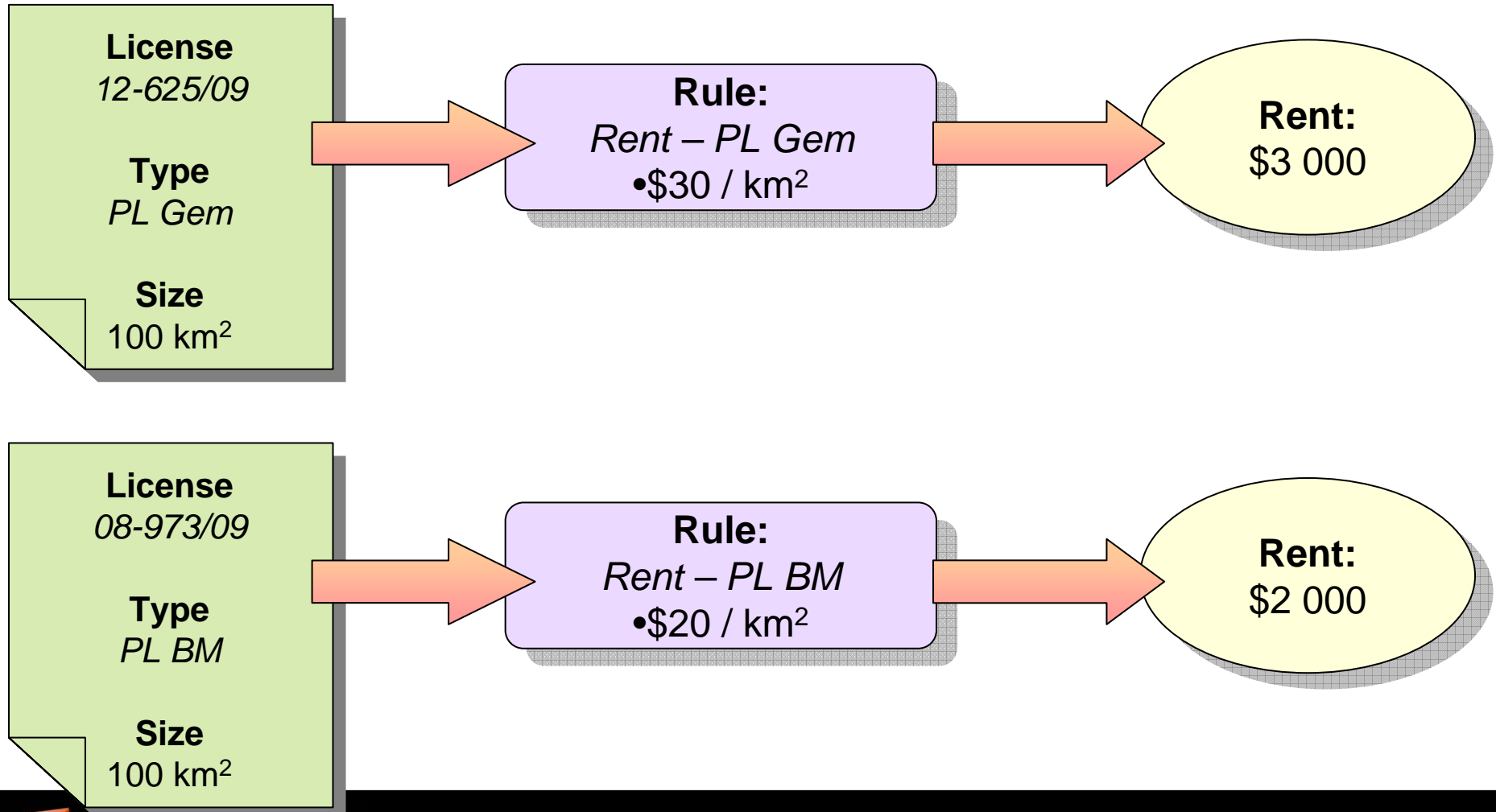
PARAMETER VALUES

- Rent that varies Regionally
 - Input: License Region
- Rent based on government defined 'unit', revised annually
 - Input: Action Due Date
- Fees that vary according to Mineral Resource
 - Input: License Resources

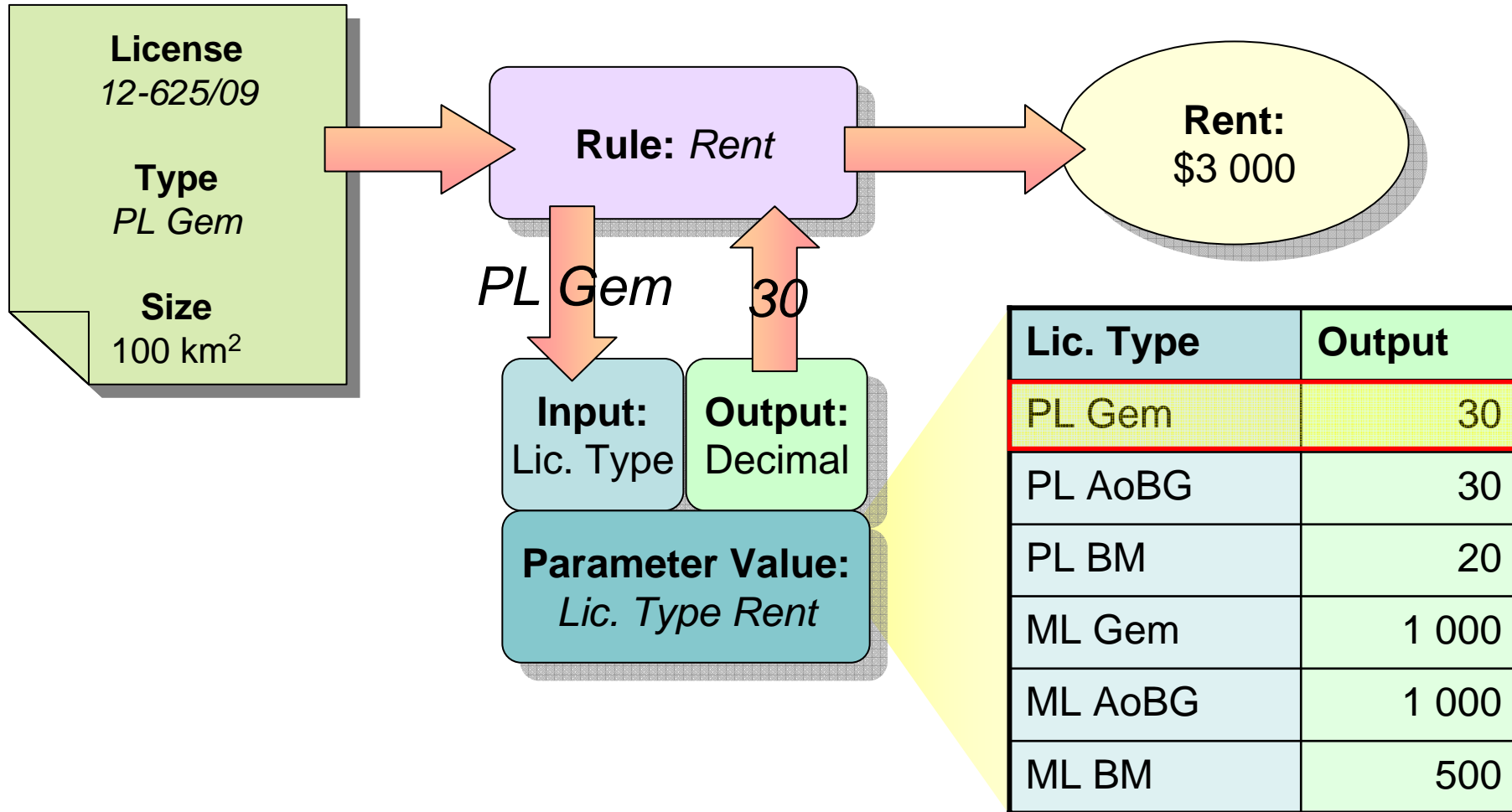
PARAMETER VALUES

- Scenario:
 - Calculating Rent for Tanzanian Prospecting Licenses
 - Rent varies with Resource
 - **Gem:** Gemstones
 - **BM:** Building Materials
 - **AoBG:** ALL other than Building Materials & Gemstones

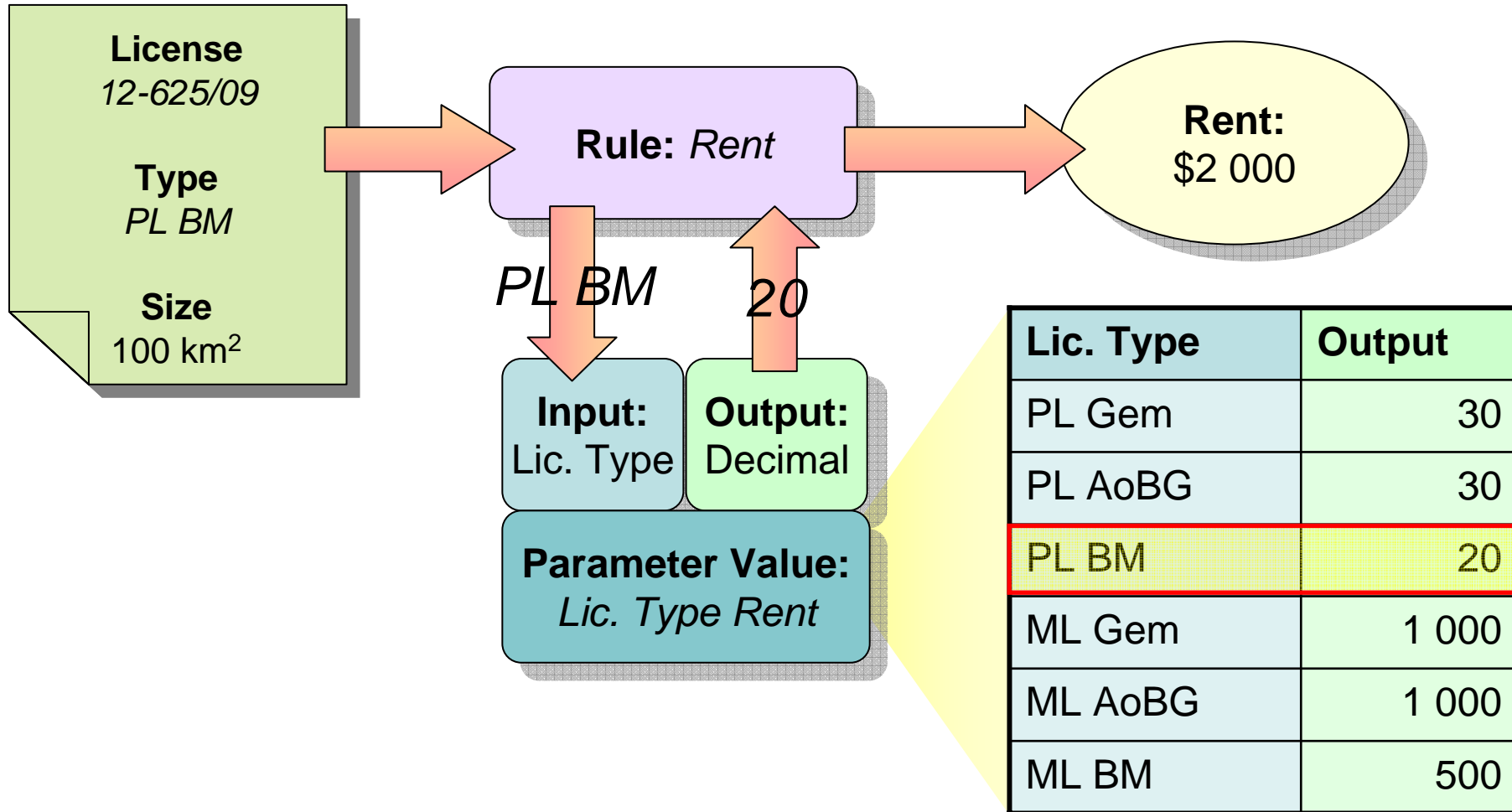
PARAMETER VALUES



PARAMETER VALUES



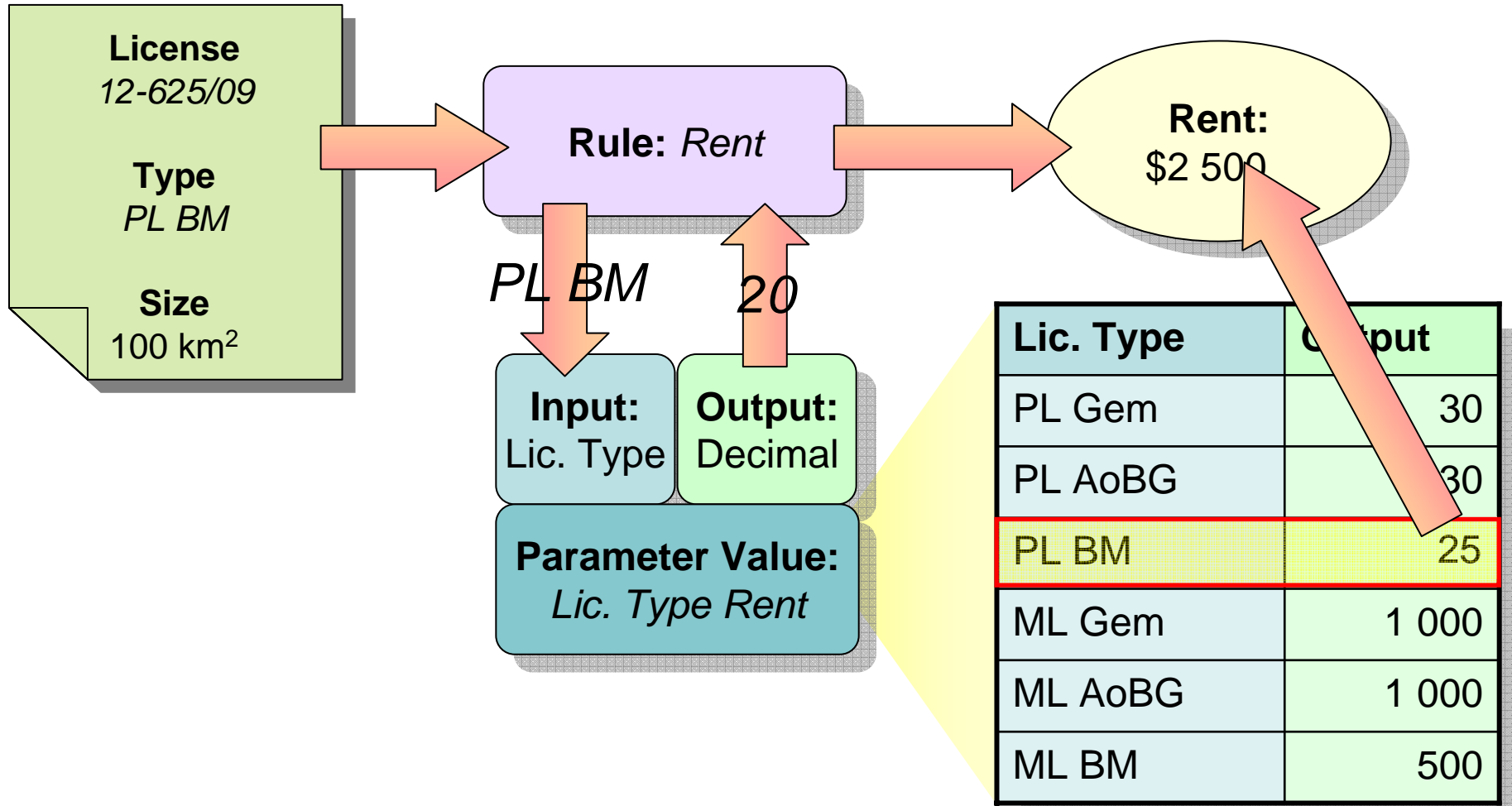
PARAMETER VALUES



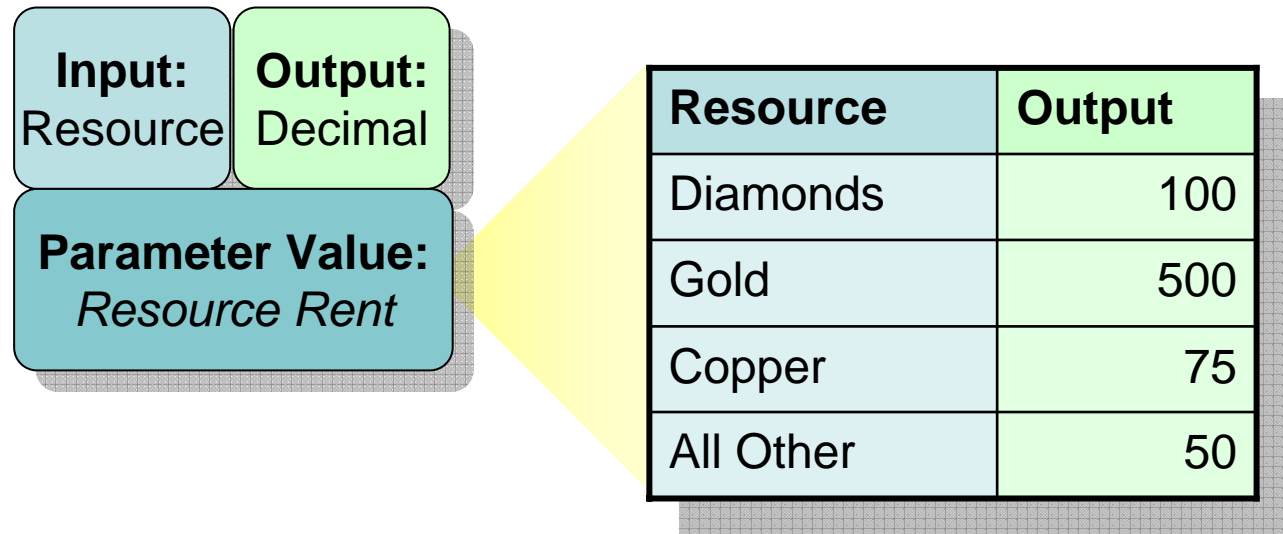
PARAMETER VALUES

- Editing:
- Easy to update values without editing the Business Rule
- Changes take immediate effect for new Actions
- Optionally applied retroactively to existing Actions

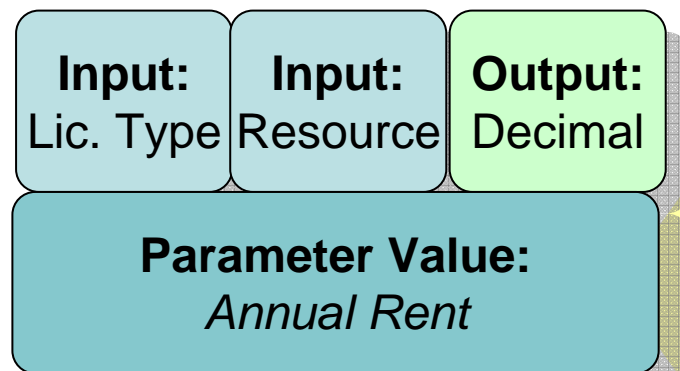
PARAMETER VALUES



PARAMETER VALUES



PARAMETER VALUES

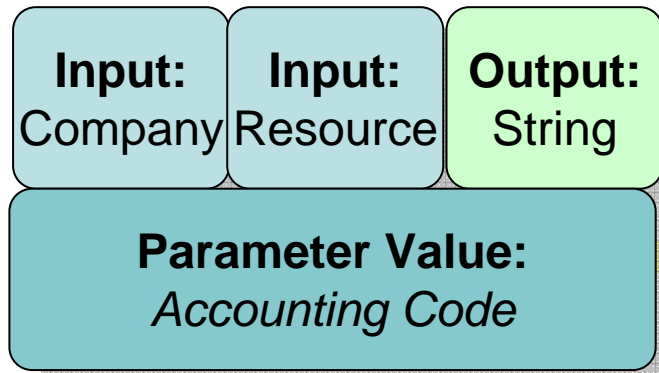


Lic. Type	Resource	Output
Prospecting	Gemstones	30
Prospecting	Building Mat.	30
Prospecting	AoBG	20
Mining	Gemstones	1 000
Mining	Building Mat.	500
Mining	AoBG	1 000

PARAMETER VALUES

Input: Date	Output: Decimal			
Parameter Value: <i>Tax Unit</i>				
Date				Output
From	To			
01 Mar 2006	28 Feb 2007			1 000
01 Mar 2007	29 Feb 2008			1 073
01 Mar 2008	28 Feb 2009			1 152
01 Mar 2009	28 Feb 2010			1 267
01 Mar 2010	28 Feb 2011			1 403

PARAMETER VALUES



Owner	Resource	Output
ALCOR S.A.	Copper	1453-00-78
ALCOR S.A.	Diamonds	1453-05-34
ALCOR Brazil	Diamonds	1836-02-46
ALCOR Brazil	Gold	1836-06-35

DEMONSTRATION

PARAMETER VALUES

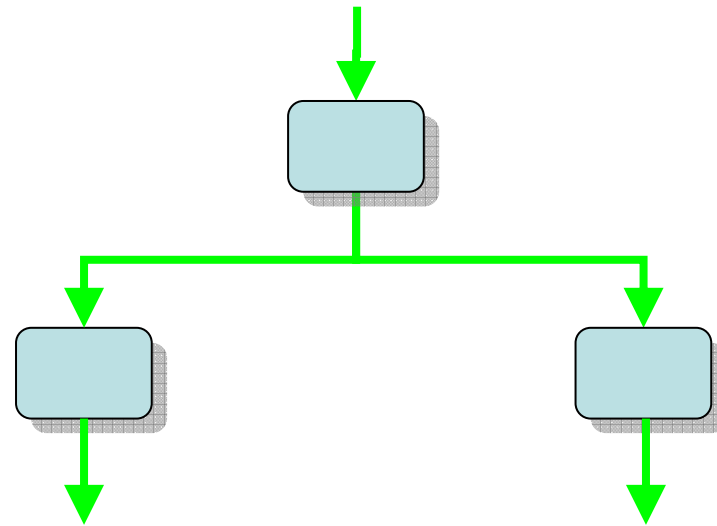
DECISION ACTIONS

DECISION ACTIONS

- New Action Type Group: **Decision**
- Used to control Workflow
- Allows a workflow to split in many directions

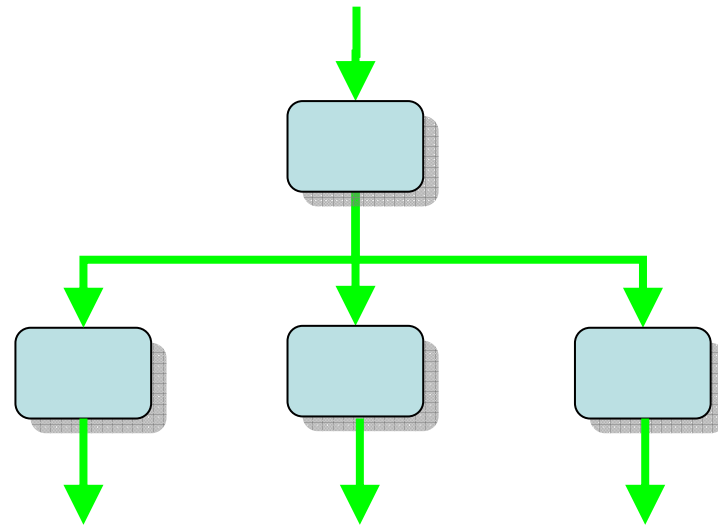
DECISION ACTIONS

- Previously flow was controlled by closing Actions **Successfully** or **Unsuccessfully**
- Not intuitive
- Workflow could only split in 2 directions



DECISION ACTIONS

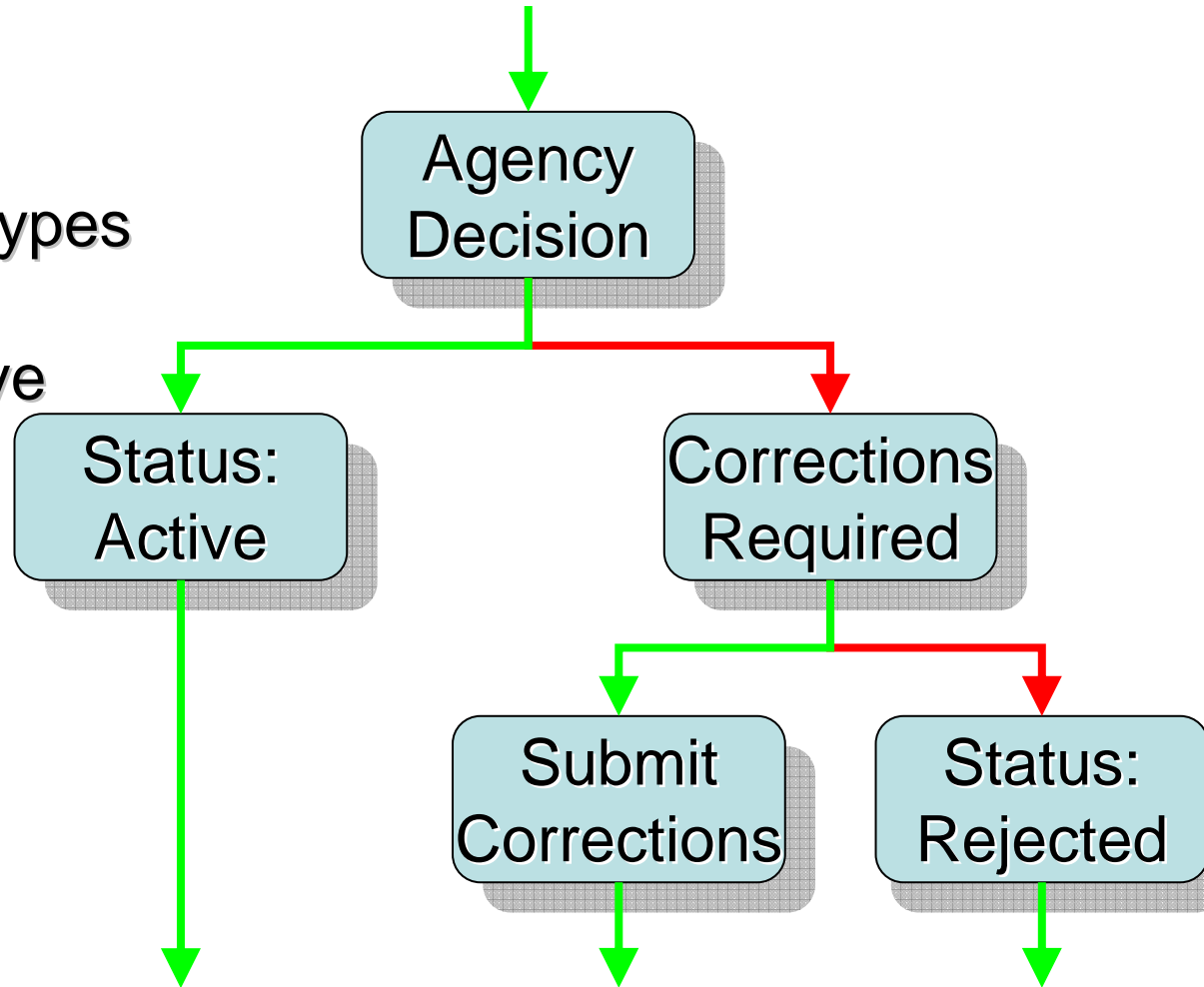
- Now flow can be controlled with a Decision
- Explicit Decision Results
- Workflow can be split in many directions



DECISION ACTIONS

Previously:

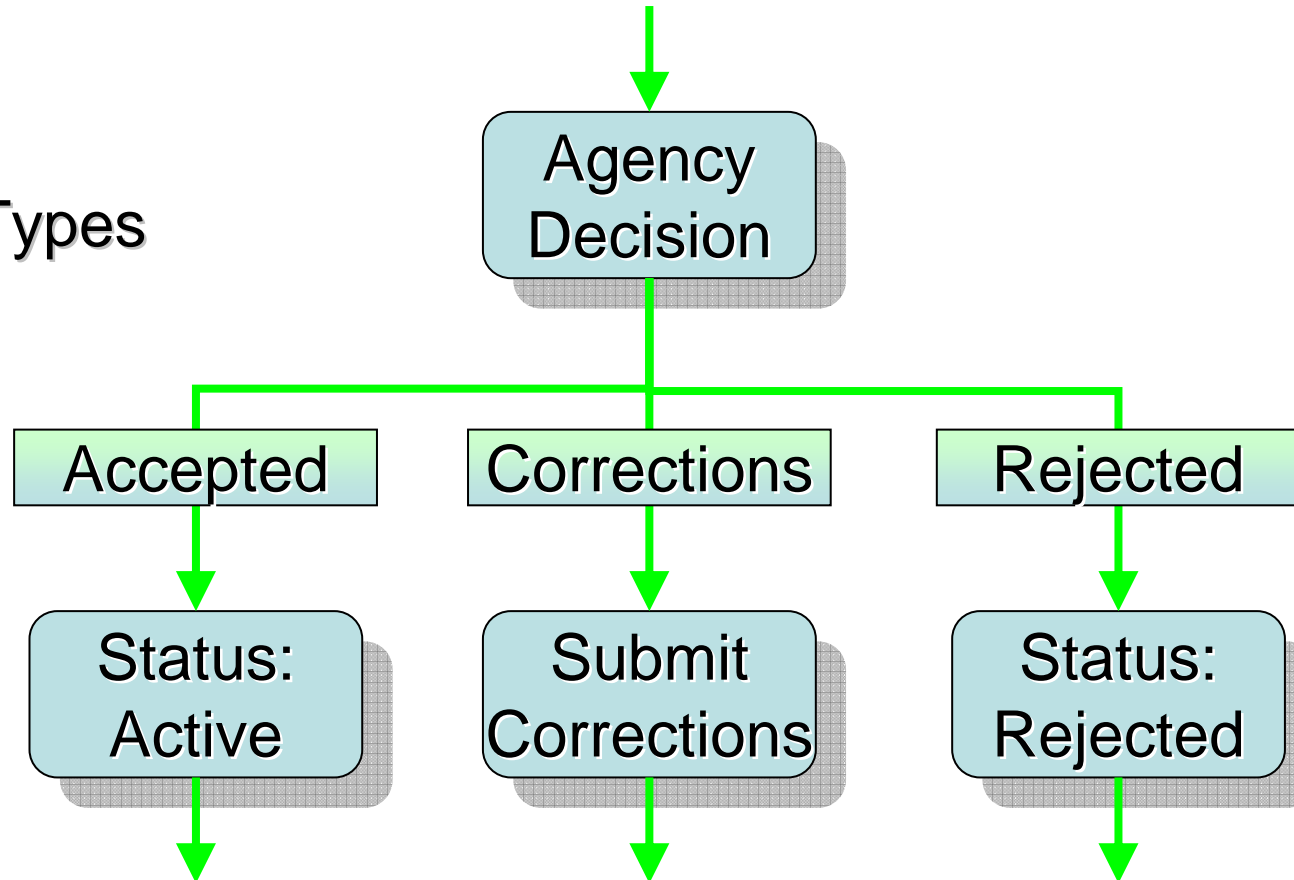
- 3 Results
- 5 Action Types
- 4 Rules
- Not Intuitive



DECISION ACTIONS

Now:

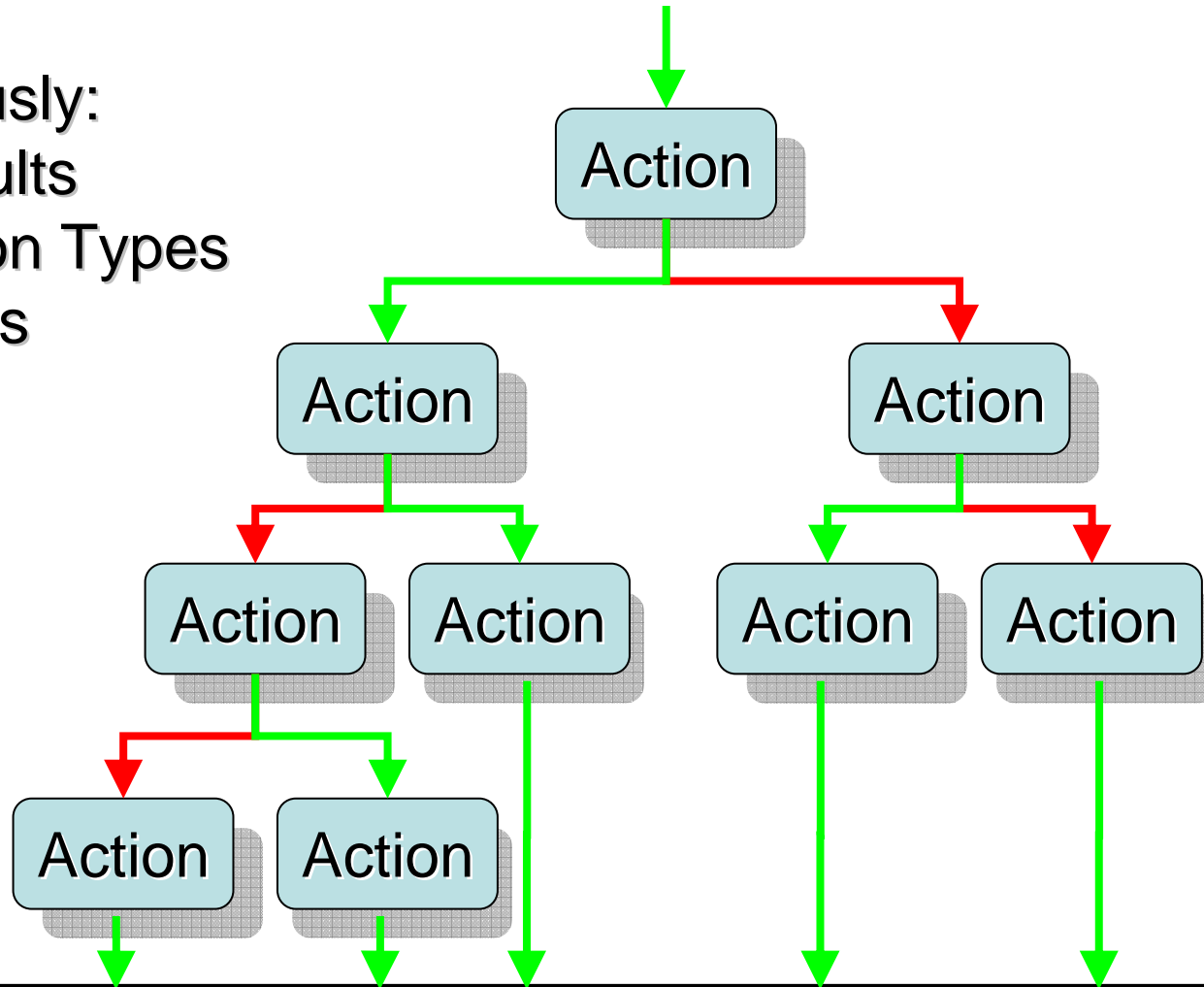
- 3 Results
- 4 Action Types
- 3 Rules
- Intuitive



DECISION ACTIONS

Previously:

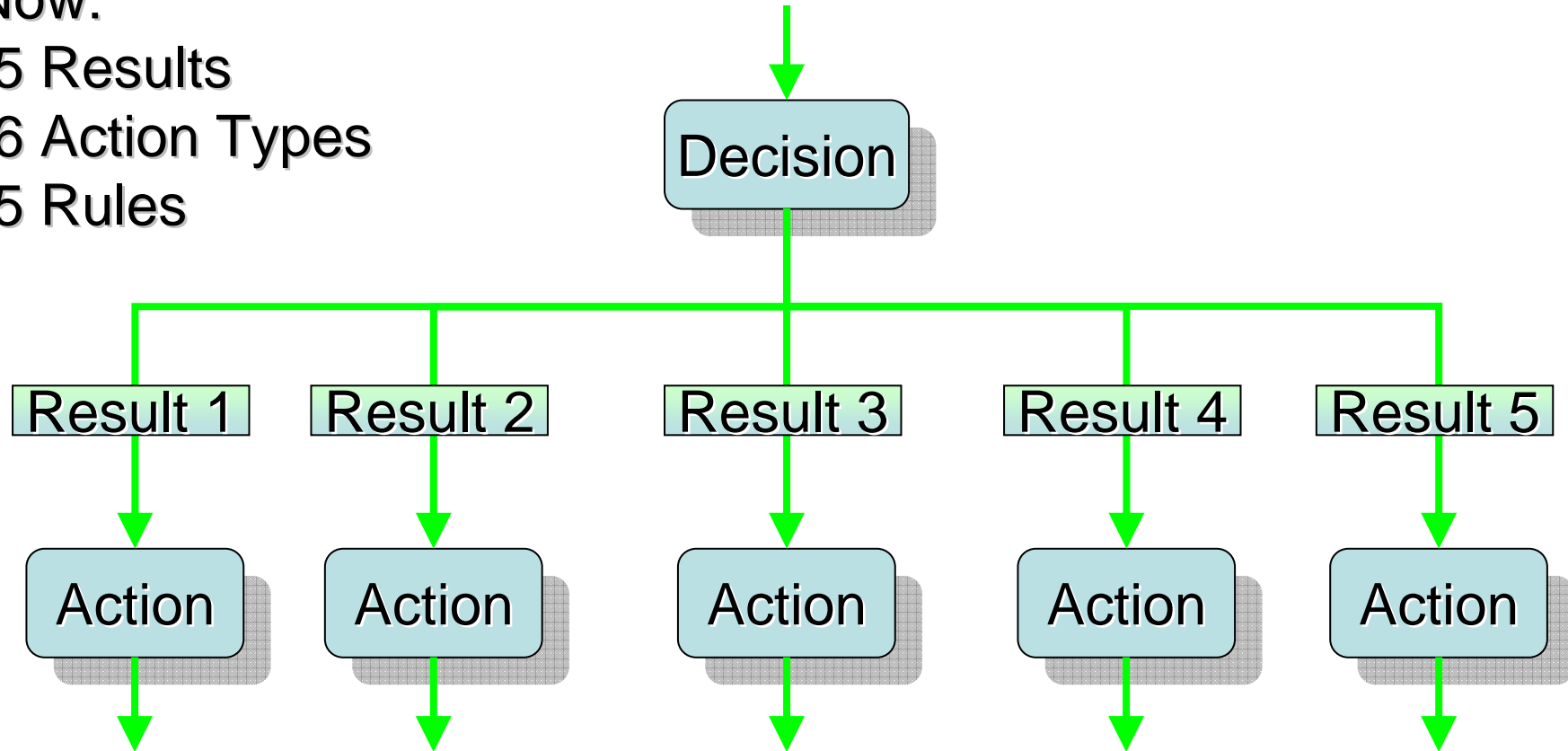
- 5 Results
- 9 Action Types
- 8 Rules



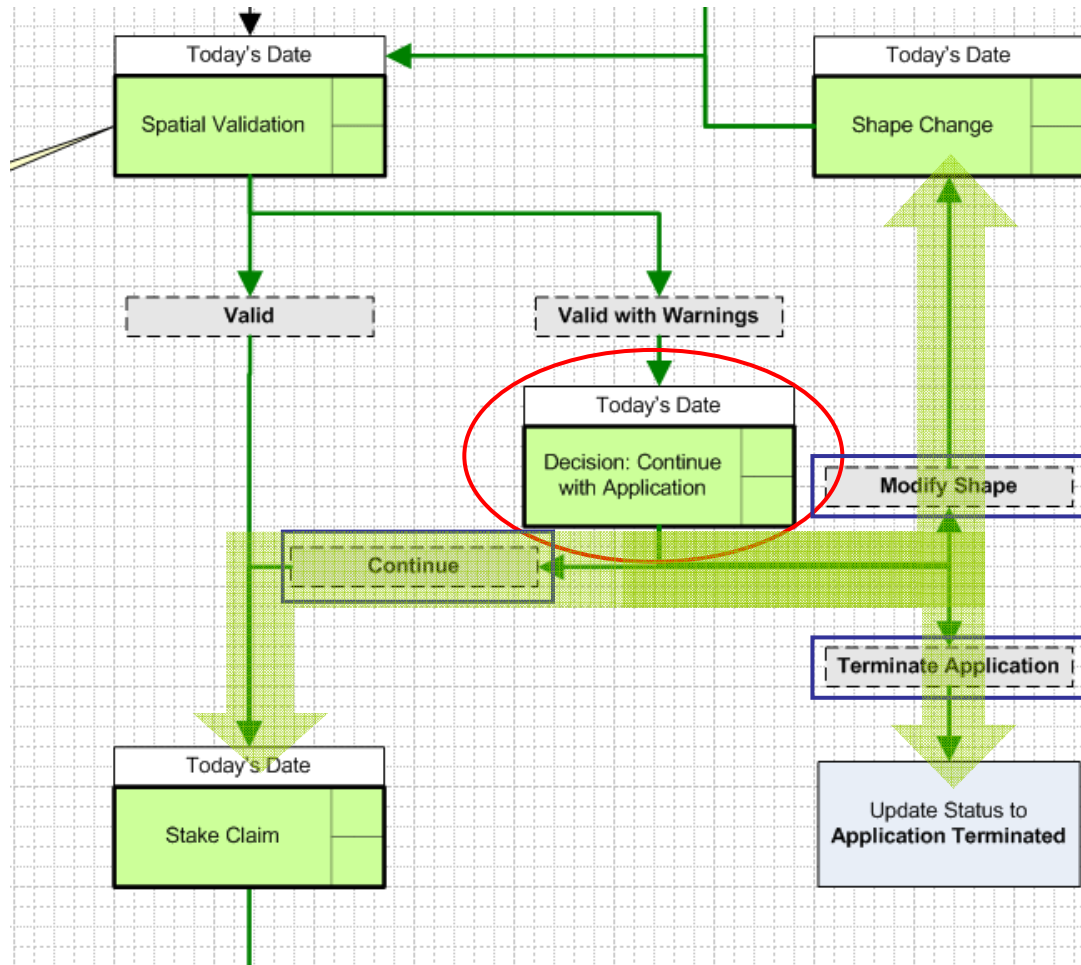
DECISION ACTIONS

Now:

- 5 Results
- 6 Action Types
- 5 Rules



DECISION ACTIONS



Decision Action
Decision Results

DECISION ACTIONS

- Administrator:
- Many Decision Action Types can be configured
- Each with appropriate Results
- Example:
 - Action Type: **Agency Decision**
 - Result: **Accepted**
 - Result: **Corrections Required**
 - Result: **Rejected**

DECISION ACTIONS

- User:
- Action Interface provides drop-down to select correct Result

DEMONSTRATION

DECISION ACTIONS

THANK YOU

