



# INTEGRATION OF GEODATA INTO THE MINING CADASTRE

BY

ENG. JOHN M. NAYOPA  
ASSISTANT COMMISSIONER FOR MINERAL  
LICENSING



# Tanzania

## Land Area

947,303 sq. km. The 31<sup>st</sup> largest country in the world

## Population

47.4 million people (2014 est.)

## ASM

~1 million people (2014 est.)



## Licences

PL	3,710
RL	10
ML	359
SML	15
PML	39,946

% of license area over Total land mass 27%



# CURRENT FLEXICADASTRE UPGRADING PROJECT

- ▶ Inception phase- EF 24<sup>th</sup> June 2014 
- ▶ Pre-registration phase-EF Aug, 2014-265 PLs registered out of 700 planned so far
- ▶ **Limited OMCTP Self-Service Portal phase** 
- ▶ Full OMCTP Self Service Portal Pilot phase
- ▶ Data Integration phase
- ▶ Full OMCTP Self Service Portal phase
- ▶ Closeout phase





# Current OMCTP look



United Republic of Tanzania  
Ministry of Energy & Minerals  
**Mining Cadastre Portal**

<b>Mining Cadastre</b>
Home
Sign In
<b>Registration</b>
Registration Process
Registration Form
<b>External Links</b>
Mining Cadastre Map
MEM Website
MEM Twitter
Share on Social Media
<b>Statistics</b>
Exports by Commodity
<b>Legal</b>
Contacts
Terms of Use
Privacy Policy

## Welcome to Tanzania's Mining Cadastre Portal

Welcome to the Online Mining Cadastre Transactional Portal of the United Republic of Tanzania. The goal of this portal is to provide an electronic platform for all stakeholders in the mining sector in Tanzania to engage directly with the Ministry of Energy and Minerals.

The Portal is open for the registration of valid Division A and B licence holders, and will soon be extended to Division C and D licence holders. Once registered, users can view their portfolio of licences and update their personal and company contact details. Once new regulations are in place, the Portal will allow registered users to apply for new tenements, undertake renewals, relinquishments and cancellations, as well as make online payments and submit reports.

To use the portal, you are first required to register in person through MEM Head Office. You can find out more about the process as well as download the required forms by clicking the appropriate links in the menu. The video below describes the registration process.

Registering to use the Tanzania Online Mining C... | MEM Portal

### Mining Cadastre Portal

<b>Mining Cadastre</b>	<b>Sign In</b>
Name	Email: <input type="text" value="portucase@spabaf"/>
Sign In	Password: <input type="password"/>
	<a href="#">Use Registration Wizard</a> <input type="button" value="Sign In"/>

#### Registration

**Registration Process**

**Registration Form**

#### External Links

**Mining Cadastre Map**

**MEM Website**

**MEM Twitter**

**Share on Social Media**

#### Statistics

**Exports by Commodity**

#### Legal

**Contacts**

**Terms of Use**

**Privacy Policy**

#### Terms of Use Summary

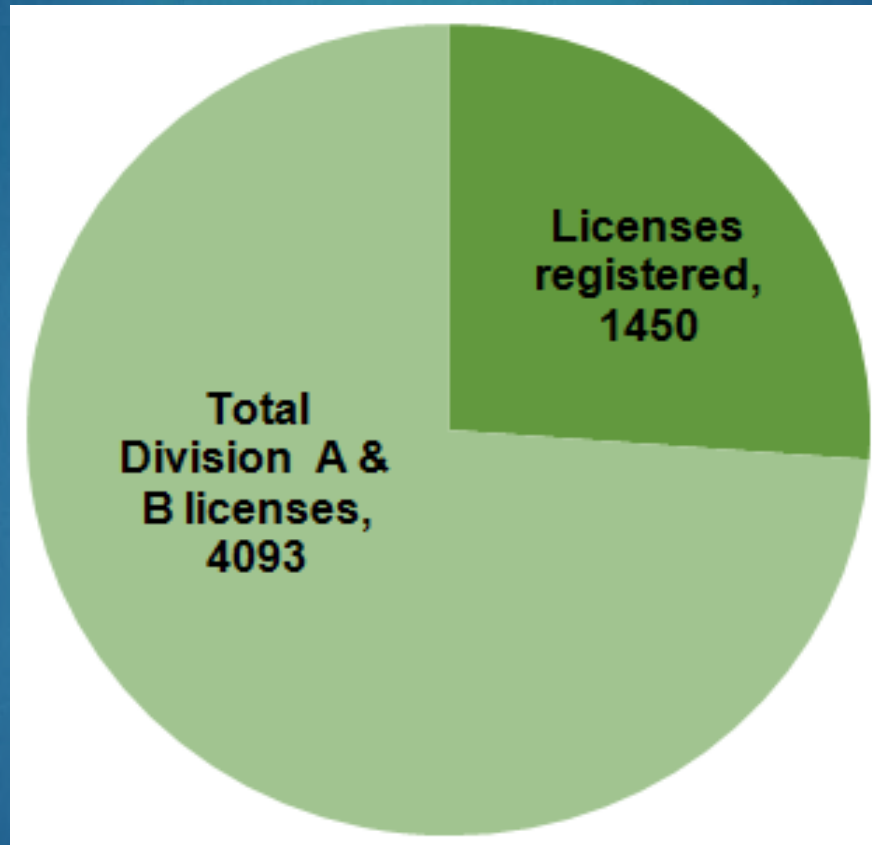
The Mining Cadastre Portal is provided for use by the Tanzania Ministry of Energy and Minerals. By accessing this system you have agreed to the Terms and Conditions of the Mining Cadastre Portal. Access to this Mining Cadastre Portal is restricted to authorized individuals or an authorized agent for a company is strictly prohibited and any unauthorized access shall be held liable against such person.

The Mining Cadastre Portal and all contents are provided "as is" without warranty of any kind, whether express or implied. All implied warranties, including, without limitation, implied warranties of merchantability, fitness for a particular purpose, and non-infringement, are hereby expressly disclaimed.

Under no circumstances will the Tanzania Ministry of Energy and Minerals or any of its Suppliers be liable to any person or business entity for any direct, indirect, special, incidental, consequential, or other damages based on any use of the Mining Cadastre Portal or any other website to which this site is linked, including, without limitation, any lost profits, business interruption, or loss of programs or information, even if the Tanzania Ministry of Energy and Minerals or any of its Suppliers has been specifically advised of the possibility of such damages.

# Achievements

## ▶ Registered OTMCP License Holders



# Other Achievements

- ▶ Upgraded License Mapping Portal
- ▶ Data Integration
  - ▶ Geological Data
  - ▶ ASM data
  - ▶ Minerals data



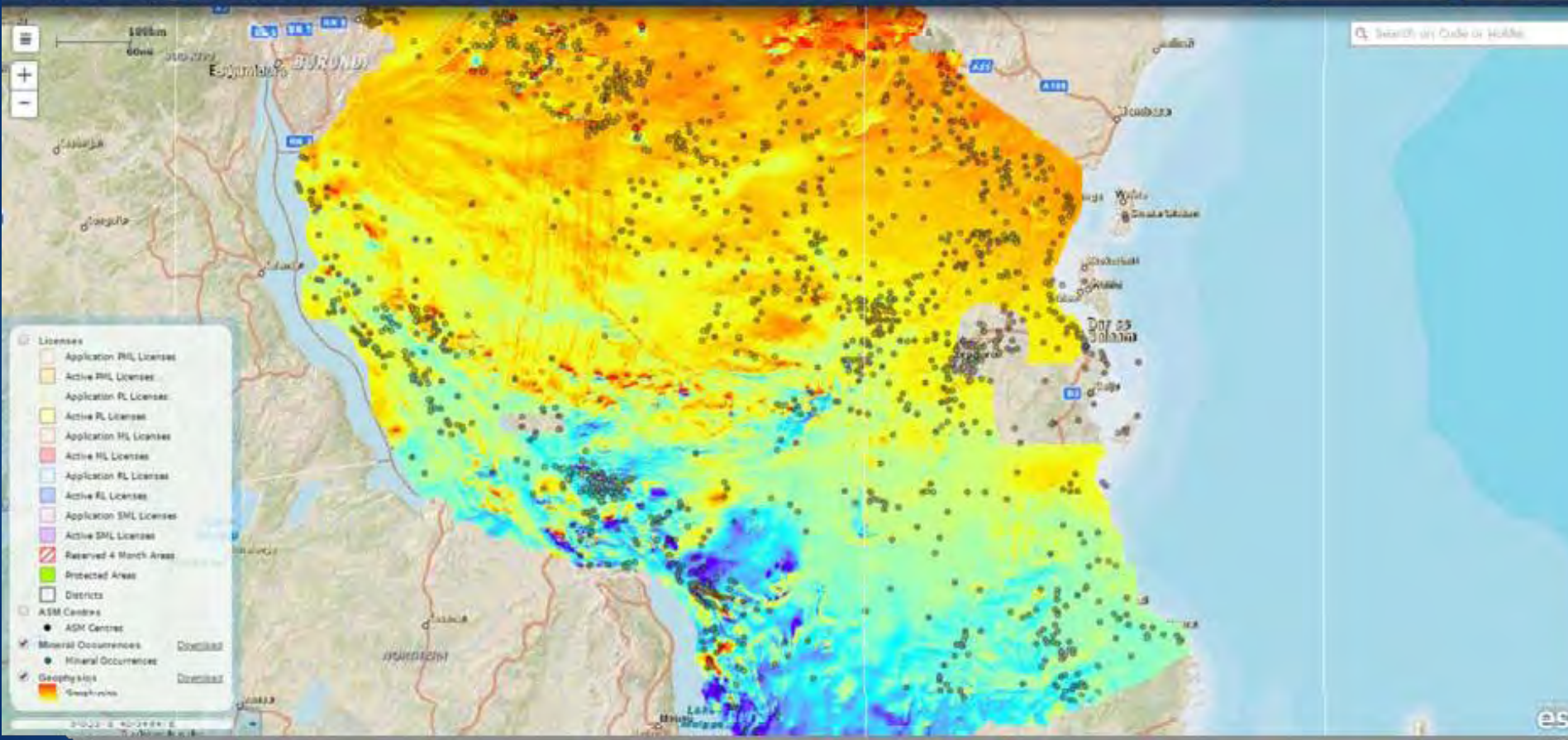


# GEO-DATA INTEGRATION

Tanzania Mining Cadastre Portal

spatial dimension

flexicadast



# Data Integration Cont'd

- ▶ the following GST datasets have been integrated with the OTMCP.
  - ▶ Mineral occurrence data
  - ▶ Airborne magnetic and radiometric data
- ▶ OMCTP will also feature
  - ▶ Minerals Statistics
  - ▶ ASM Statistics





# Data Integration Cont'd

- ▶ Additional geological data will include the following:
  - ▶ Geological Maps at 1:250,000 and 1:100,000 scales covering at least 88% of the country
  - ▶ Airborne geophysical maps at 200m and 250m spacing, covering about 15% of the Country
  - ▶ Selected geological reports



# CONCLUDING REMARKS

- ▶ The public is our focus- lets make it simple for them
- ▶ Governments have wishes and needs-lets advise them well
- ▶ Networking is important to share experiences

