


CMDA

CADASTRO MINEIRO DIGITAL DE ANGOLA

2025 Landfolio User Conference

 comunicacao.cma@anrm.gov.ao

 cadastromineiro.mirempet.gov.ao



Agenda



- OVERVIEW
- BENEFITS
- IMPLEMENTATION
- CONCLUSIONS
- QUESTIONS

Overview

MIREMPET

Ministério dos Recursos Minerais, Petróleo e Gás

The Ministry of Mineral Resources, Oil and Gas - "MIREMPET", responsible for the formulation, management, execution, control and monitoring of the Executive's policy, regarding:

- Geological and mineral activities;
- Oil, gas and biofuels, development and production of minerals;
- Crude oil and gas refining;
- Petrochemicals, storage, distribution;
- Marketing of mineral and petroleum products and;
- Production and marketing of biofuels.





CMA – Cadastro Mineiro Digital de Angola

CMA
C A D A S T R O M I N E I R O D I G I T A L D E A N G O L A
CMA

CMA – Cadastro Mineiro Digital de Angola Why?

- MISSION

- Improve Licensing, Registration and Granting of Mining Rights

- GOALS

- Transparency
- Automation
- Productivity
- Standardization
- Integration with other systems and agencies



The screenshot shows the homepage of the Cadastro Mineiro Digital de Angola. The header includes the logo of the Government of Angola and navigation links for 'Página Inicial', 'Mapa Do Cadastro', and 'Informação'. A red navigation bar contains links for 'PT | ENG', 'Criar Conta', and 'Entrar'. The main banner features a mining site with the text 'Bem-vindo ao Portal do Cadastro Mineiro de Angola'. Below the banner, there is a section titled 'Veja estes vídeos introdutórios ao nosso Portal' with a video player showing a tutorial on 'Como criar uma conta no Portal (pdf)'. The text on the page describes the portal's purpose and provides instructions on how to use it.

O Portal do Cadastro Mineiro oferece uma plataforma electrónica que permite às partes interessadas no sector mineiro em Angola interagir directamente com o órgão regulador, a Agência Nacional de Recursos Minerais de Angola. Este Portal foi desenvolvido com o objectivo de assegurar padrões internacionais de transparência, promovendo a melhoria das condições para a realização de negócios no país.

Através do [Mapa do Cadastro](#), pode visualizar todas as licenças existentes, os seus detalhes básicos, e pesquisar títulos, alvarás ou empresas.

O Portal encontra-se disponível para o registo de titulares de licenças e público em geral. Após o registo, os utilizadores poderão:

- Visualizar o seu portfólio de licenças
- Submeter relatórios periódicos
- Gerir as obrigações dos seus direitos mineiros actuais
- Submeter pedidos de novas licenças, guias e certificados

Como dar entrada a um Pedido de Concessão de Direitos Mineiros (n

IGEO and the Geologic Information

Geology Map IM



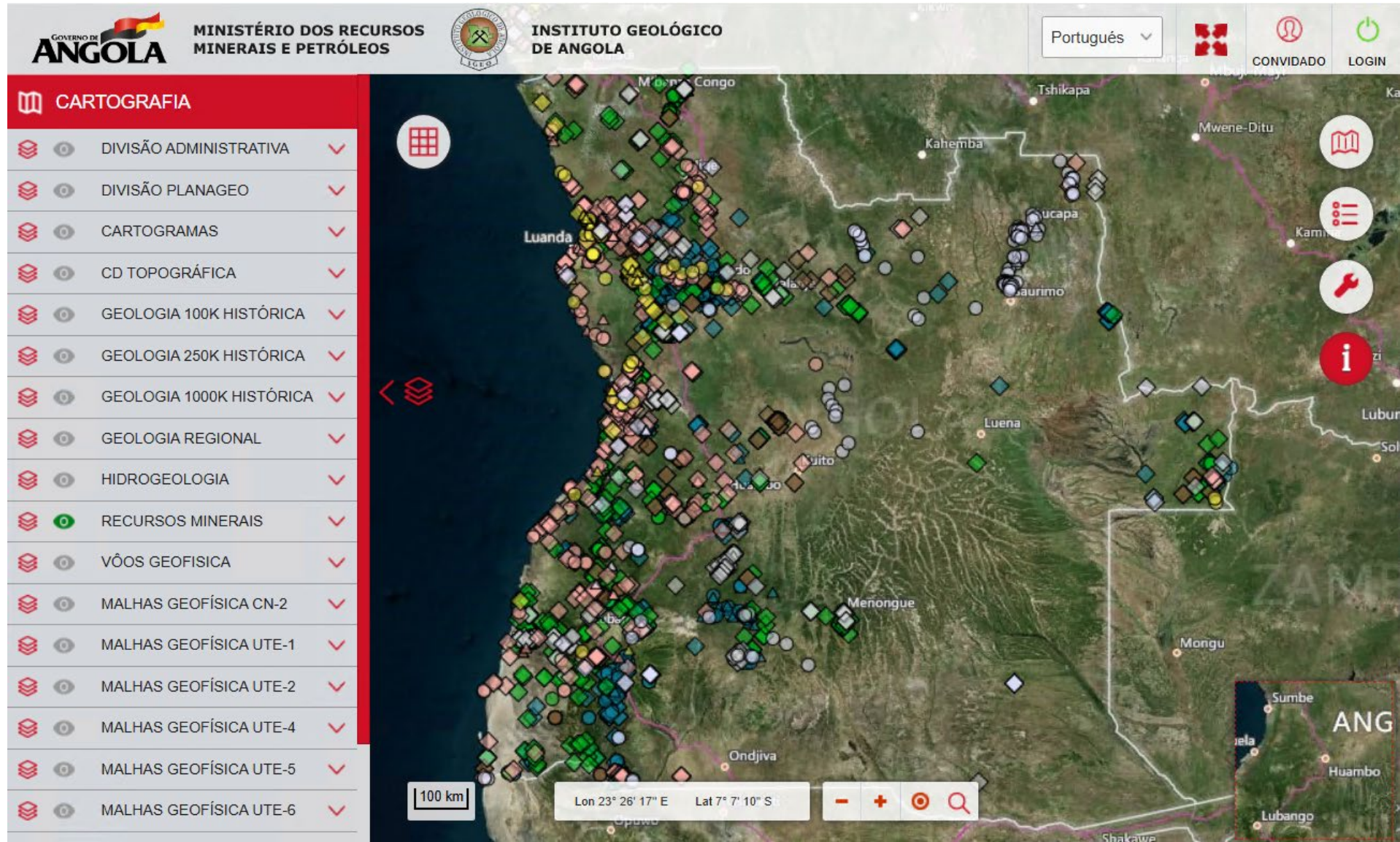
Angola has
great
potential in
mineral
resources

IGEO and the Geologic Information

Geology Map IM



Angola has
great
potential in
mineral
resources



CMA – Cadastro Mineiro Digital de Angola STRATEGIC OVERVIEW



The government committed itself to the PUBLIC ADMINISTRATION DIGITAL TRANSITION AGENDA 2022-27, with a view to speeding up the implementation of projects using e-GOVERNANCE TOOLS.



The IMPLEMENTATION OF THE CMA is part of the National Development Plan for 2023-27.

CMA – Cadastro Mineiro Digital de Angola

PRINCIPLES



Transparency

- Public access to non-confidential data



Accessibility

- Online platform providing real-time access to information



Efficiency

- Simplified and streamline processes



Security

- Data and Access Controls and Security

CMA – Cadastro Mineiro Digital de Angola

FUNCTIONS



Company and
Person Registration



Applications for
Mining Licenses and
Authorizations



Monitoring and
Inspections



Integration with Tax
and Revenue
systems



Data Analytics and
Reporting on Mining
Activities

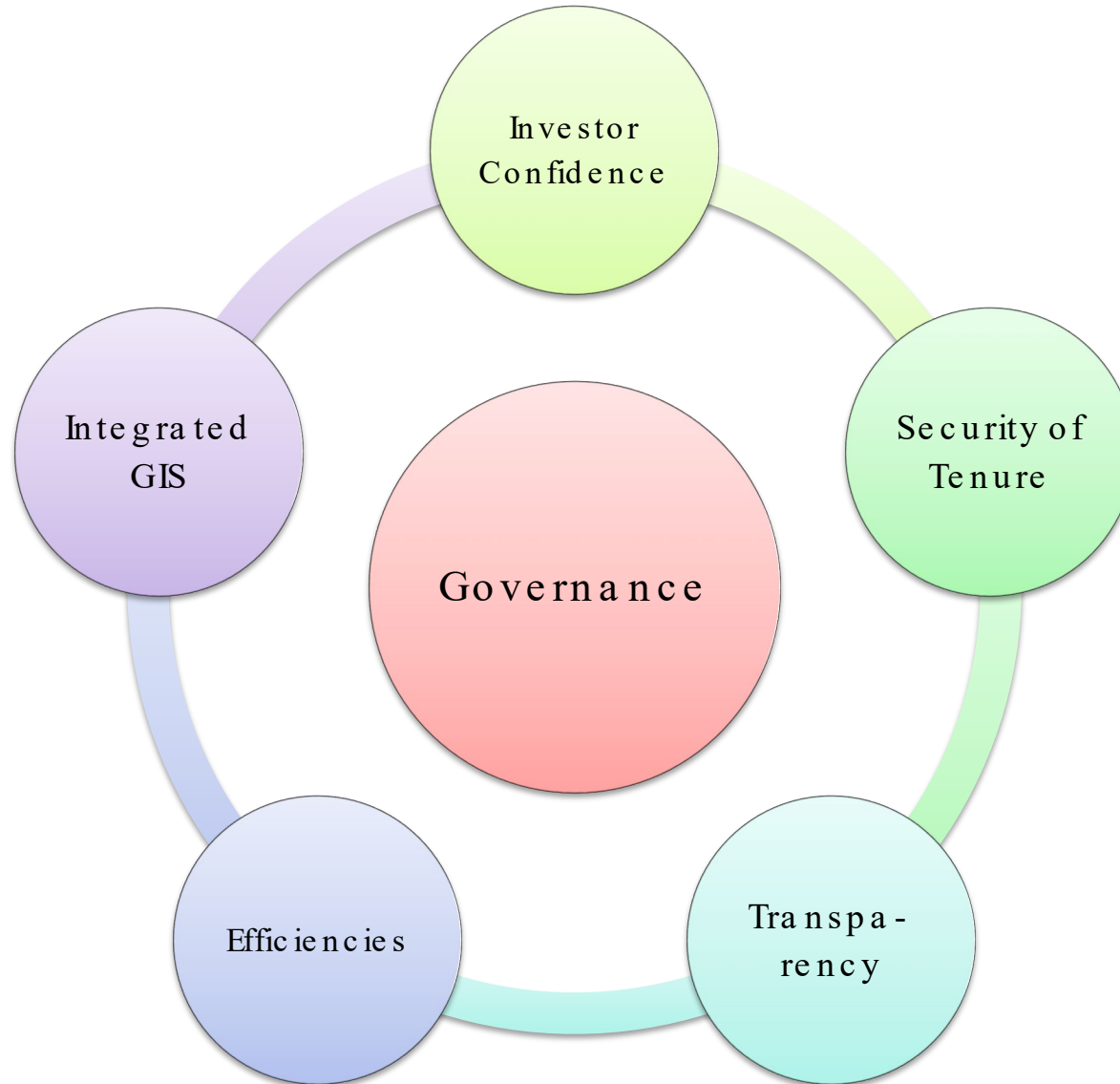


Stakeholder
communications

BENEFITS OF IMPLEMENTING THE CADASTRE SYSTEM (CMA)

Consolidation and Development of Mining Industry

Automation



Security of Mining Rights



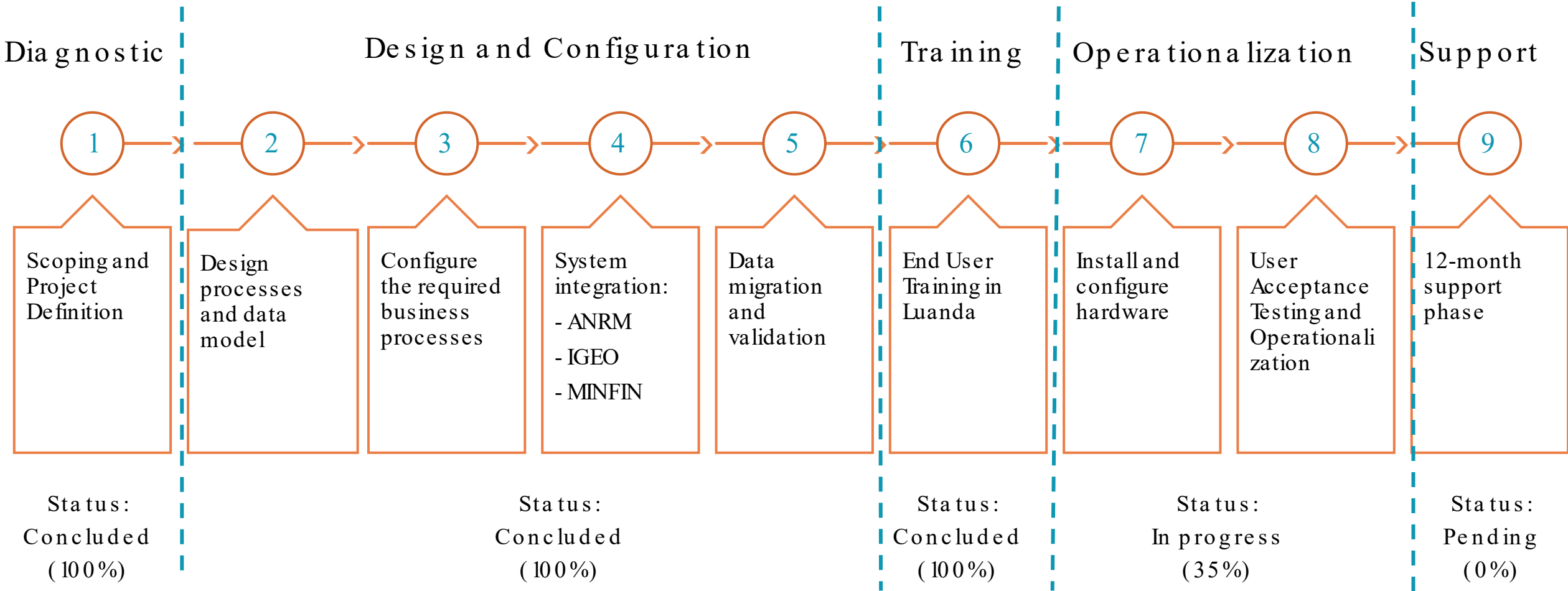
The system assures the mining rights, recording the geographic location, ownership and time validity of mining rights, monitoring and assuring compliance in real time.



Handles all processes related to exploration and mining activities, thus increasing efficiency and improving response times.

IMPLEMENTATION CMA

IMPLEMENTATION CHRONOLOGY



Status as of January 15th, 2025



CONCLUSIONS

Diversification of Mineral Resources



Angola has great potential in mineral resources;



The implementation of the digital mining cadastre system aims to leverage technology to facilitate concessions of exploration and exploitation, as well as promoting the country's economic value;



The e-GOV Portal will allow the investors to have an integrated view of the data and opportunities available in the country;



With the implementation of the CMA, the government is committed to leveraging mining data to create sustainability in the system and continuity in the country's economic growth.

QUESTIONS?

