



Glenn Matthews | Director: Business Development
Nick Holleman | Product Manager: Portals



Crown Land Information Platform (CLIP) Project, Victoria State Government, Australia

Introduction

- **Victoria, Australia**

- Smallest mainland state in Australia – 237,000 sq. kms
- Most densely populated state – 6.5 million people

- **Crown Land Information Platform (CLIP) Project**

- CLIP is a 3 Year Project to modernise the IT systems used for Crown Land Administration. First significant investment in systems since mid 1990s
- Project commenced with the Department of Environment, Land, Water and Planning (DELWP) in June 2018.



What is Crown Land?

- Crown land is essentially public land that is owned and managed by the Crown (i.e. the State Government)
- In Victoria, Crown land can be either unreserved or reserved and is managed to provide environmental, social, cultural and economic benefits to the people of Victoria.

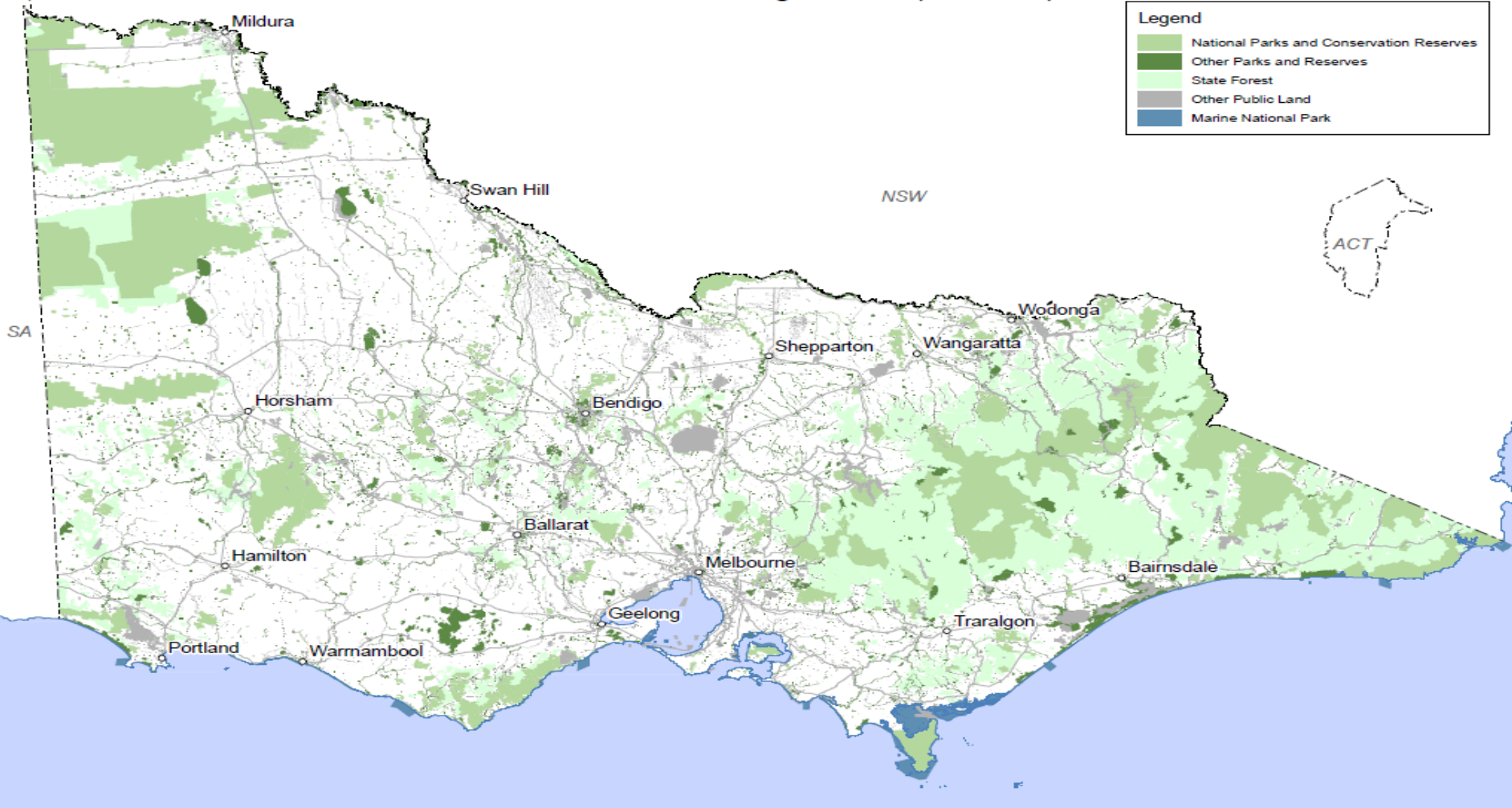


Crown Land in Victoria

- The Crown land estate makes up approx. 1/3 of the state (approx. 8 million hectares) with over 100,000 parcels identified for:
 - National Parks, State parks and Conservation Areas (*approx. 50% of the total*)
 - State forests (*approx. 39% of the total*)
 - Reserves (over 13,000)
 - Unreserved Crown land (*approx. 4% of the total*)
 - Additionally, there are approx 1.2 million hectares of marine waters that are also classified as Crown land



Public Land Management (PLM25)



Crown Land Administration in Victoria

Key responsibilities for DELWP (under various acts) include:

- Reserving land (and revoking Reservations)
- Acquiring land, and selling Crown Land
- Approving, Issuing and Managing Leases (over 700) and Licences (over 40,000)
- Supporting Local Committees of Management (CoMs)
 - over 1,200 CoM that manage over 1,500 reserves
- Obligations over other land managers (Local Councils, Incorporated Associations, Alpine Resorts, Government Departments and Agencies)
 - Other entities manage around 6,000 reserves

CLIP Project

- **Key objective:** replace outdated technology and unsupported systems
 - The legacy system is also heavily reliant upon manual processes, hardcopy files and has little integration to GIS and other internal platforms.
- **Solution:** Implement Landfolio back-office system and an e-Government Portal, called the '*Crown Land Kiosk*'.
- **Project commenced:** June 2018
- **System go-live:** Back-office system March 2020
- **Crown Land Kiosk** to be launched in April 2020

CLIP Project – The Details

- Trimble configured Landfolio to meet the specific project and Crown Land regulatory requirements for Victoria
 - Configuration of Landfolio to cater for the Crown Land data model;
 - Setup of 85+ land asset types
 - 60+ workflows for reserves, leases, licences, land sales and Committees of Management



Warning: [See list](#) of failed back end process requests

Recently Accessed

There are **37** Results in the list.

[1](#) [2](#) [3](#) [4](#) [5](#) [6](#) [7](#) [8](#)

Type	Name	Description
Land Managers	TOONGABBIE RECREATION RESERVES COMMITTEE INCORPORATED (6597)	Land Managers, Active
Land Asset	TOONGABBIE RACECOURSE RESERVE (1504425)	Reserves, Recreation Area, Current
Land Asset	TOONGABBIE RECREATION RESERVE (2022875)	Tenure, General Licence, Active
Action	Submission of Financial Return on TOONGABBIE RECREATION RESERVES COMMITTEE INCORPORATED (6597)	Submission of Financial Return
Action	Confirm CoM Appointment Dates on TOONGABBIE RECREATION RESERVES COMMITTEE INCORPORATED (6597)	Confirm CoM Appointment Dates

[1](#) [2](#) [3](#) [4](#) [5](#) [6](#) [7](#) [8](#)

My Searches

Name	Search Type
Barwon Coast Committee of Management	Land Asset
Plantation Reserves - Active	Land Asset

I want to...

Add a Land Asset

[Licence: Create Licence / Lease](#)

[Reserves: Create Reserve](#)

Add an Land Case

[Native Title: Create Native Title Assessment Case](#)

Schedule New Action

[Land Sales: Withdraw Land Sales Case](#)

[Native Title: Withdraw Native Title Assessment Case](#)

[Reserves: Regulations](#)

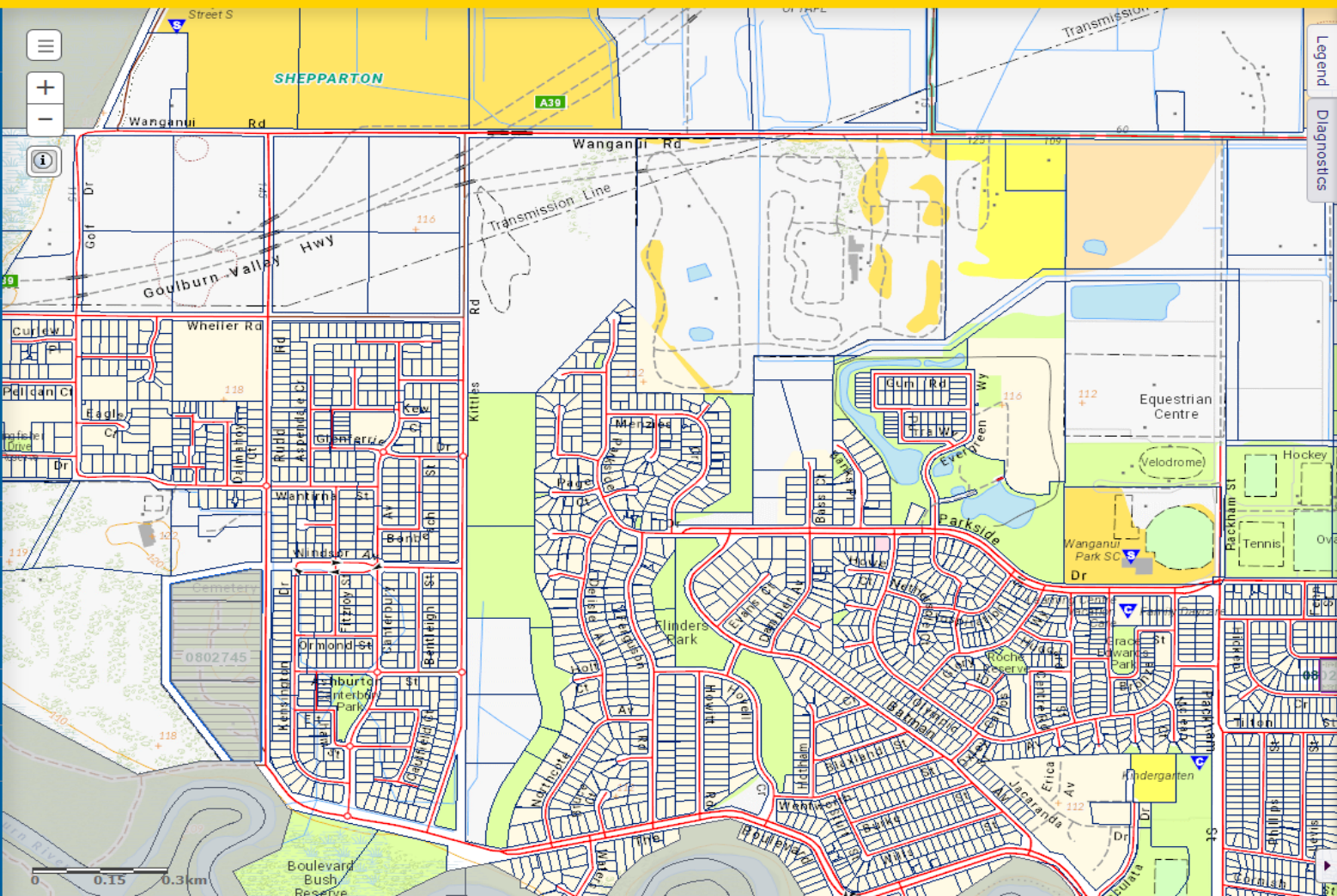
Land Asset Summary

Land Asset Type Group	Application	Active	Inactive
Crown Parcels	0	112133	31602
Reserves - Alpine Resort	1	7	1
Reserves - Bushland Reserve	0	1499	0
Reserves - Coastal Reserve	1	216	0
Reserves - Coastal Waters - TO REMOVE	0	0	0
Reserves - Community Use Reserve	13	2773	3
Reserves - Conservation Park	2	5	0
Reserves - Historic Reserve	1	98	0
Reserves - Marine National Park	0	1	0
Reserves - Marine Park/Marine and Coastal Park	0	0	0

[1](#) [2](#) [3](#)

CLIP Project – The Data

- Large volumes of data!
 - Migration of over 300,000 land records (parcels, reserves, licences, land cases etc.)
 - 5 distinct data migration iterations, including 10 separate data sources
- Custom Reporting
 - 52 custom reports providing important information to users, such as:
 - Billings Report for Leases
 - Committees of Management Membership Lists
 - Native Title Assessment Reports
 - Rental Invoice Summary
 - Tenure Valuations
 - VOTS Parcel Change Report



Legend

Diagnostics

 Land Acquisitions

 Crown Parcels

- Parcel Labels (Code)
- Government Road
- Crown Land

 Mapshare: Properties & Par...

- House Number Labels Proposed
- House Number Labels
- ADDRESS Proposed
- ADDRESS
- Property Proposed
- Property
- Parcel Proposed
- Parcel (Labels)
- Parcel

 Reserve Land Manager

- DELWP
- Parks Victoria
- Local Committee of Management
- Local Council
- Other
- Statutory Body/Authority
- Trust
- Cemetery Trust
- Government Department

 Reserve Management

- Reserve Labels (Code)
- Implied
- Vested
- Direct
- Delegated

 Basemap: Vicmap API

2,534,199 m 2,571,746 m

CLIP Project – Parish Plans

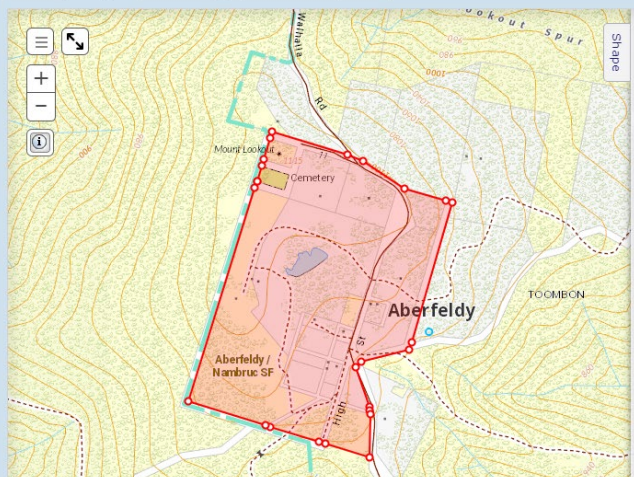
- Import of approx. 3,000 Parish Plans (high res images saved as PDF documents) and linked to shapes in the database
 - Parish plans are old cadastral maps (some dated as far back as 1837) which show boundaries, allotment numbers, parcel dimensions etc.*

Parish Plans > Details

ABERFELDY TP Responsible Office: Asset Class:

Type: Parish Plans

General **Shape** Documents (2) Discussions Audit



Coordinate System: GDA 1994 VICGRID94
Official Area:
Calculated Area: 42.3797 Ha
Derived Shape: Not a derived shape

Parts: Part 1

Area: 42.3797 Ha

	East (x)	North (y)
1	2,619,740.38	2,422,168.75
2	2,619,754.04	2,422,212.44
3	2,619,760.04	2,422,231.65
4	2,619,778.89	2,422,291.96
5	2,619,784.66	2,422,311.12
6	2,620,001.48	2,422,244.83
7	2,620,046.14	2,422,225.98
8	2,620,163.64	2,422,147.55
9	2,620,283.70	2,422,112.63
10	2,620,302.90	2,422,106.99
11	2,620,184.80	2,421,705.24
12	2,620,178.31	2,421,684.22





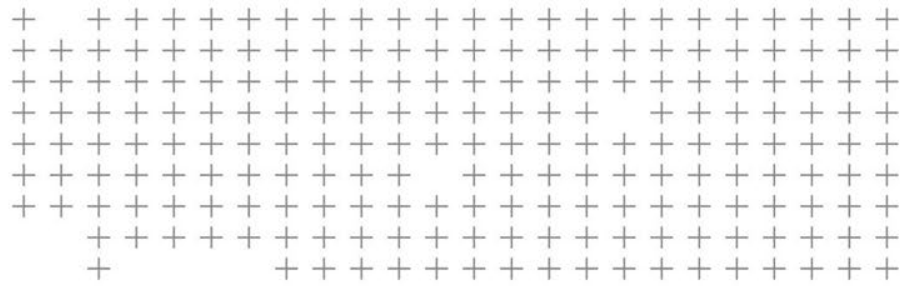
CLIP Project – New Functionality & Integrations

- Various new software enhancements developed, including
 - Functionality to assist with hardcopy file tracking
 - Data Update Services
 - SAML Authentication
 - Oracle Financial System Integration
 - ECM (Electronic Content Management) System Integration
 - Victorian Online Titles System (VOTS) Integration
 - VicMap Integration
 - Crown Land Kiosk



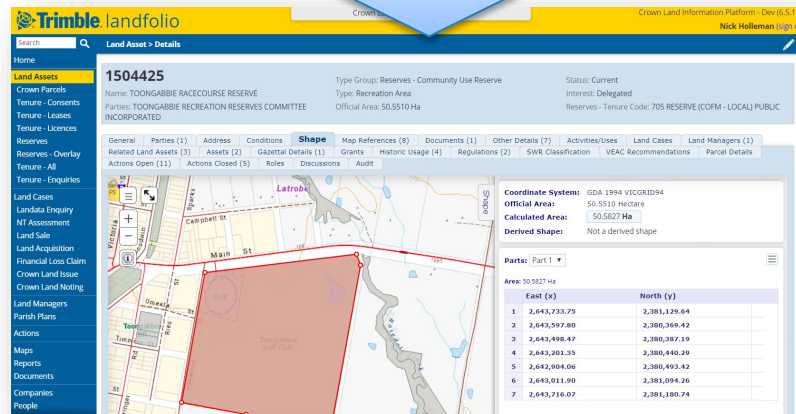
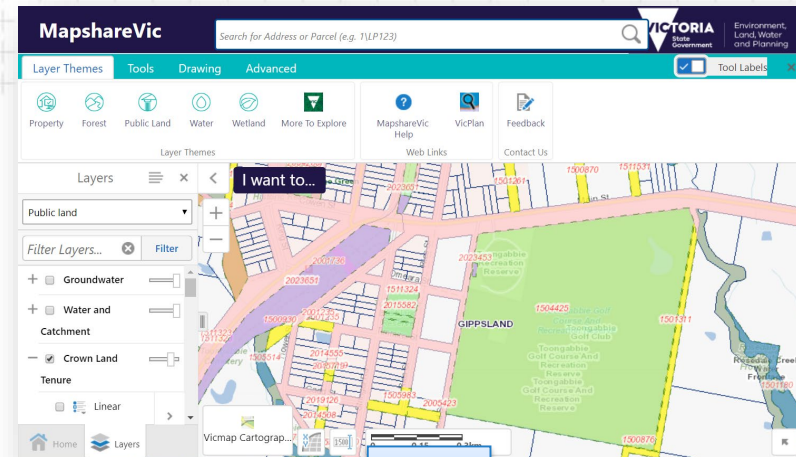
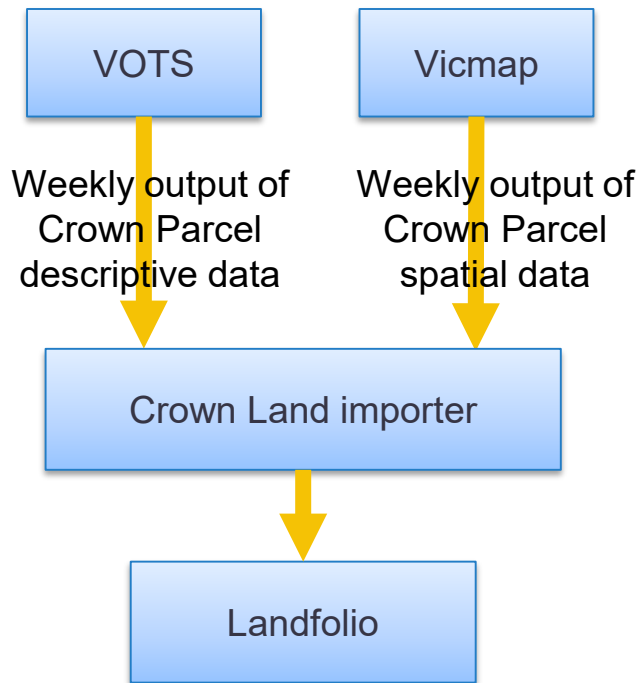
....Over to you, Nick!



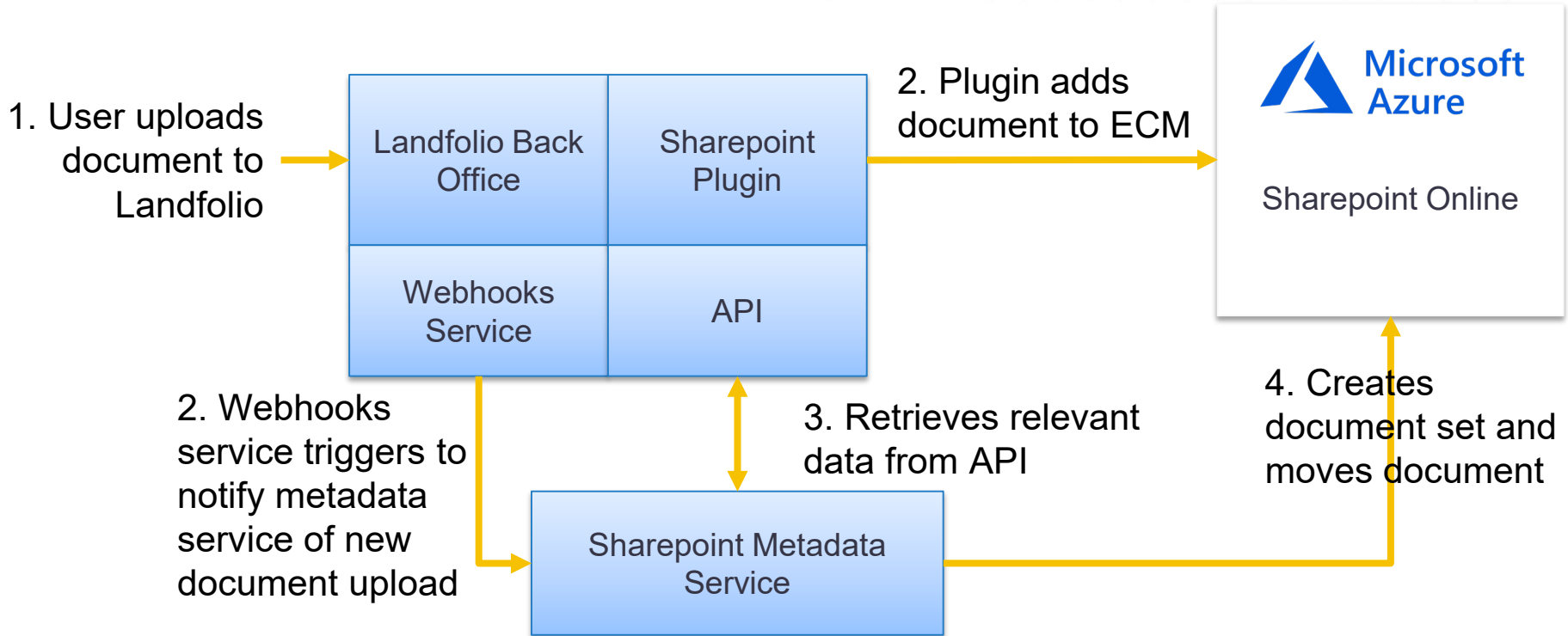


Victoria Crown Lands Information Platform (CLIP)
Integrations and Kiosk

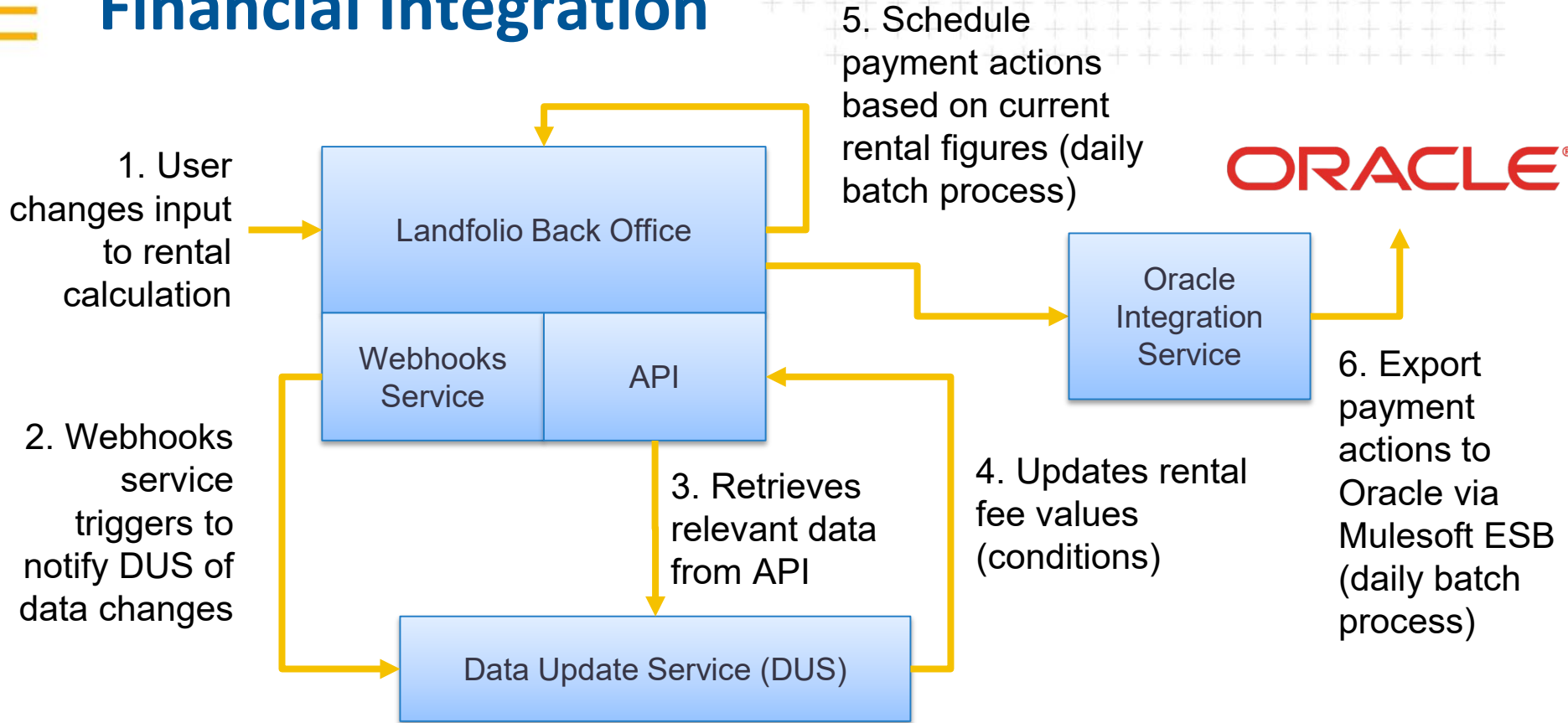
GIS Integration



Document (ECM) Integration



Financial Integration





Committee of Management Kiosk

- Crown Land Reserves are co-managed with Land Managers, such as
 - Parks Victoria
 - Local Councils
 - Local Committees of Management
- Committees of Management will interact with DELWP via an online e-government kiosk
 - Manage committee obligations
 - View and manage their reserves
 - Submit and manage delegated tenure



Kiosk Demonstration

- Let's have [a look...](#)

A scenic landscape featuring rolling hills and mountains under a cloudy sky. The foreground is filled with dense, green and yellowish vegetation. The middle ground shows a valley with a river or stream, and the background consists of several layers of blue-toned mountains, creating a sense of depth. The sky is filled with soft, grey clouds, suggesting an overcast day.

Trimble
*Transforming the way land tenure is secured and
land assets are managed.*

Thank you!

Thank you also to Michael Black (DELWP Project Manager) for contributions to this presentation

landadmin.trimble.com