



Landfolio Geodata Portal

Glenn Matthews

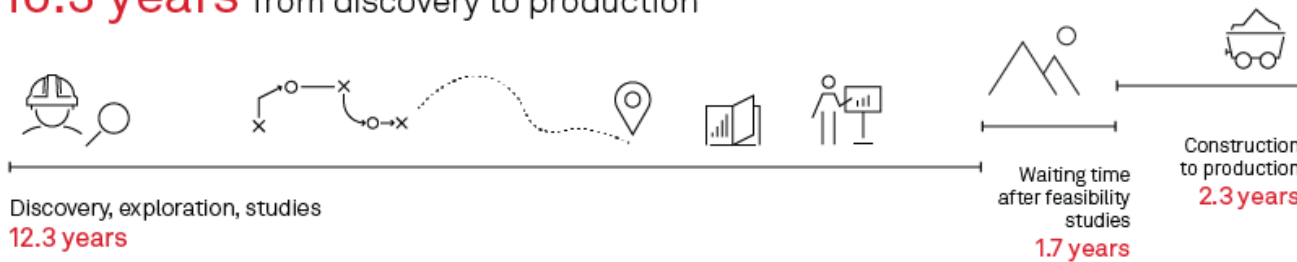
Director Business Development



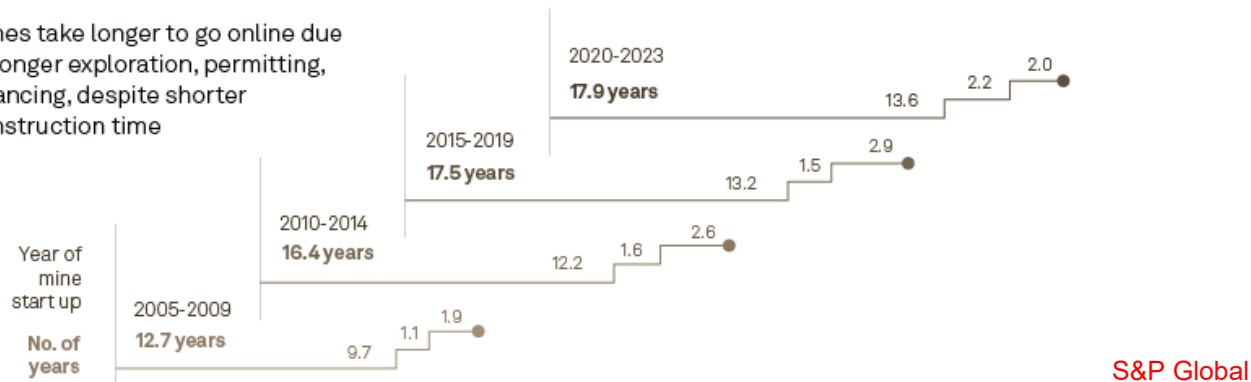
Why is access to Geoscience Data so important?

Mines take a long time to develop!

Mines take an average of **16.3 years** from discovery to production



Mines take longer to go online due to longer exploration, permitting, financing, despite shorter construction time



Mines started between 2020-2023 took an over 15 years (on average) to develop

A major expense is the acquisition and interpretation of geoscientific data

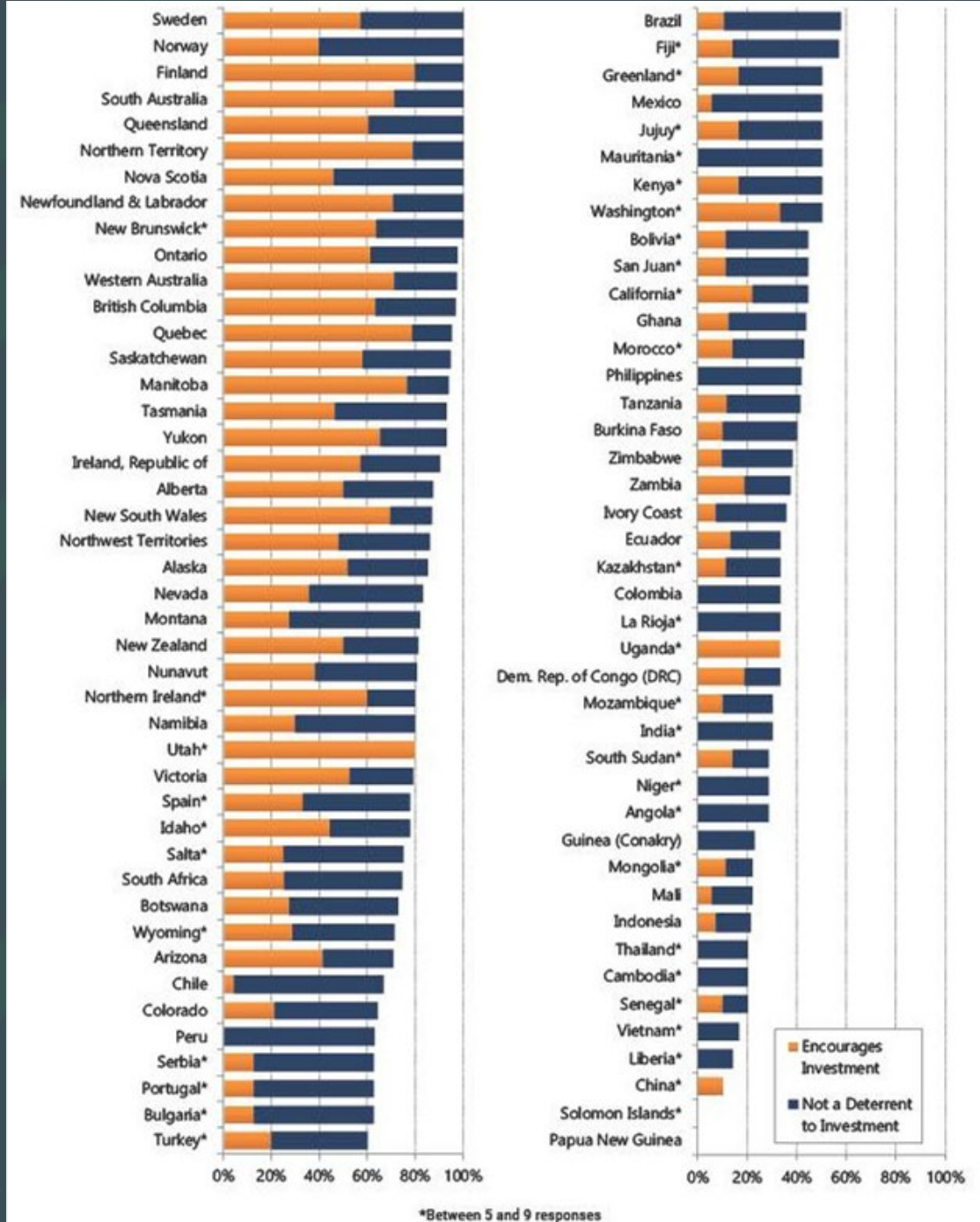
How to level the playing fields?

Public availability of geoscientific data can play a role

Aligns with Spatial Dimension's mission to promote transparency and knowledge-sharing

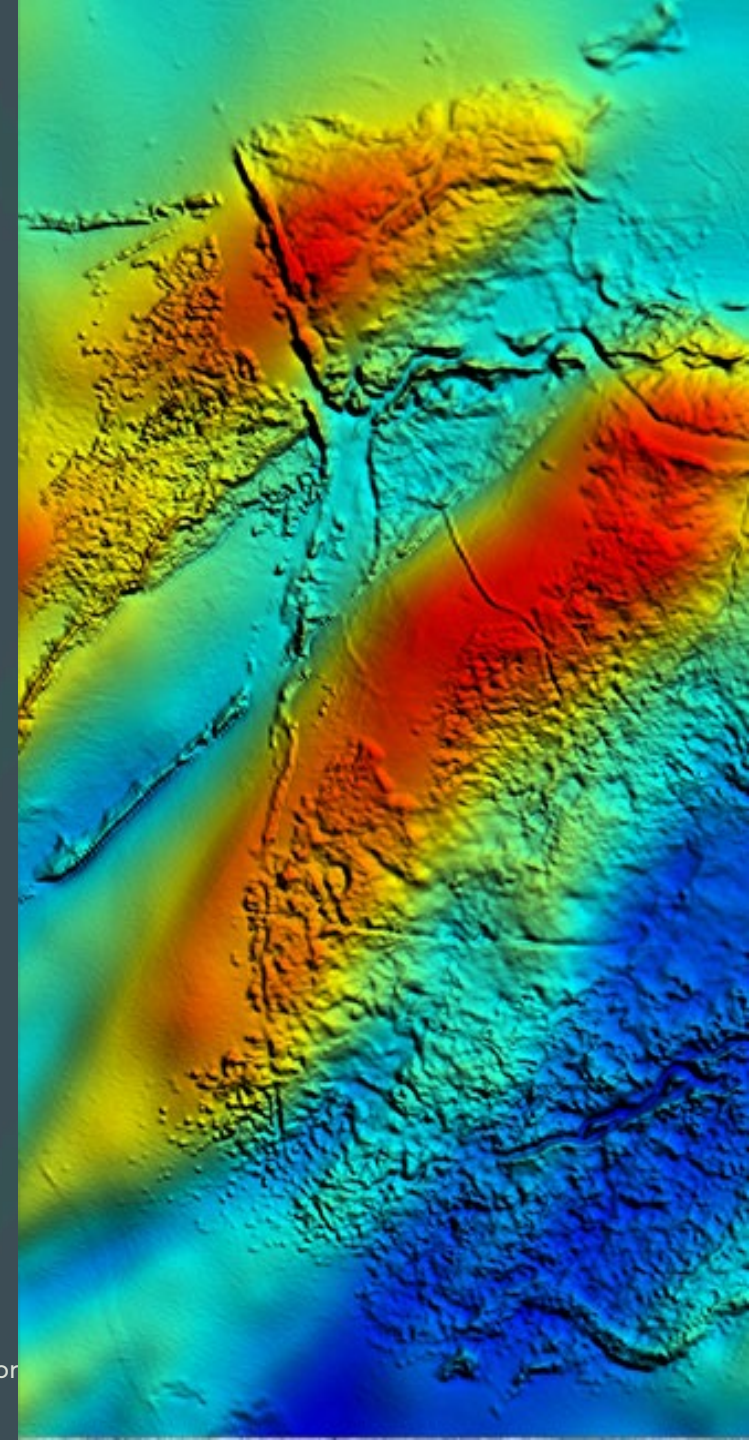


Fraser Institute Annual Survey of Mining Companies, 2023
 fraserinstitute.org
 Figure 30: Geological Database



Geodata Portal

- Maintain a catalogue of spatially located digital products, e.g.
 - Exploration and scientific reports
 - Collated bid packages
 - Analytical data
 - Geological maps and shapefiles of license and permit boundaries
- Discover products via browsing a map, or using search terms
- Provide e-commerce capability for data downloads and purchases
- Integration with local payment gateway



Concepts

- Product Catalogue
 - A list of digital products from the media library, with a location, price and metadata, that are available for purchase
- Media Library
 - A set of digital files and related location and metadata stored within the geodata portal and used to compile products
- Catalogue Administration
 - An interface that allows an administrator to
 - Upload media files and capture associated location and metadata
 - Curate products with associated location and metadata derived from the media



Demonstration

Click [here](#) to view demo site

The screenshot displays the Geodata Sales Portal interface. On the left, a sidebar contains filter options: Filter products, Product type, File type, Tags, Published before, Published after, Author, License code, and License Type (Free/Paid). The main content area features a search bar, a sort dropdown set to 'Published - new to old', and a list of three data packs. Each pack includes a thumbnail, title, price, description, and publication details. On the right, a large satellite map shows a desert region with a river and several red location markers. The map includes zoom controls and a small inset map at the bottom left.

Geodata Sales Portal Browse Catalogue Products Files About News English

Filter products

Product type

File type

Tags

Published before:

Published after:

Author

License code

License Type

Search products... Sort by: Published - new to old

Kalabsha mine data pack \$595

This report contains comprehensive information about the Kalabsha mine. It includes a detailed history of the mine, geological data, extraction methods used, and the types of minerals found.

Published 01 August 2024 Files 3

Abu Ghalaga data pack \$0

This report provides an in-depth analysis of the El Sibaiya mine. It includes a thorough exploration of the mine's geological structure, the types of minerals extracted, and the extraction techniques employed.

Published 01 July 2024 Files 1

El Sibaiya Mines data pack \$1200

This report provides an in-depth analysis of the El Sibaiya mine. It includes a thorough exploration of the mine's geological structure, the types of minerals extracted, and the extraction techniques employed.

