



flexicadaastre

Governance - Risk - Compliance

Portal de Mapas para Corporaciones

*2ª LARUC - FlexiCadaastre
Conferencia Regional de Usuarios Latinoamérica*

Lima, Septiembre 3 y 4, 2015

Rogelio Castejon

spatial dimension

FlexiCadaastre en Corporaciones

Acceso y uso de FlexiCadaastre:

- Seguridad de la información
- Mucha información disponible no para todos
- Necesidad de Capacitación
 - Complejo para usuarios eventuales
 - Dificultad en mantener los permisos
- Muchas distintas jurisdicciones o instancias del FlexiCadaastre

FlexiCadastre en Corporaciones

Acceso y uso de FlexiCadastre:

- Distintas necesidades de visualizar la información
- Distintas formas de presentación de la información

Portal Publico de Mapas

  www.spatialdimension.com/Cadastre-Portals

Botswana



DRC



Kenya



Namibia



Mozambique



Papua New Guinea



Rwanda



South Sudan



Tanzania



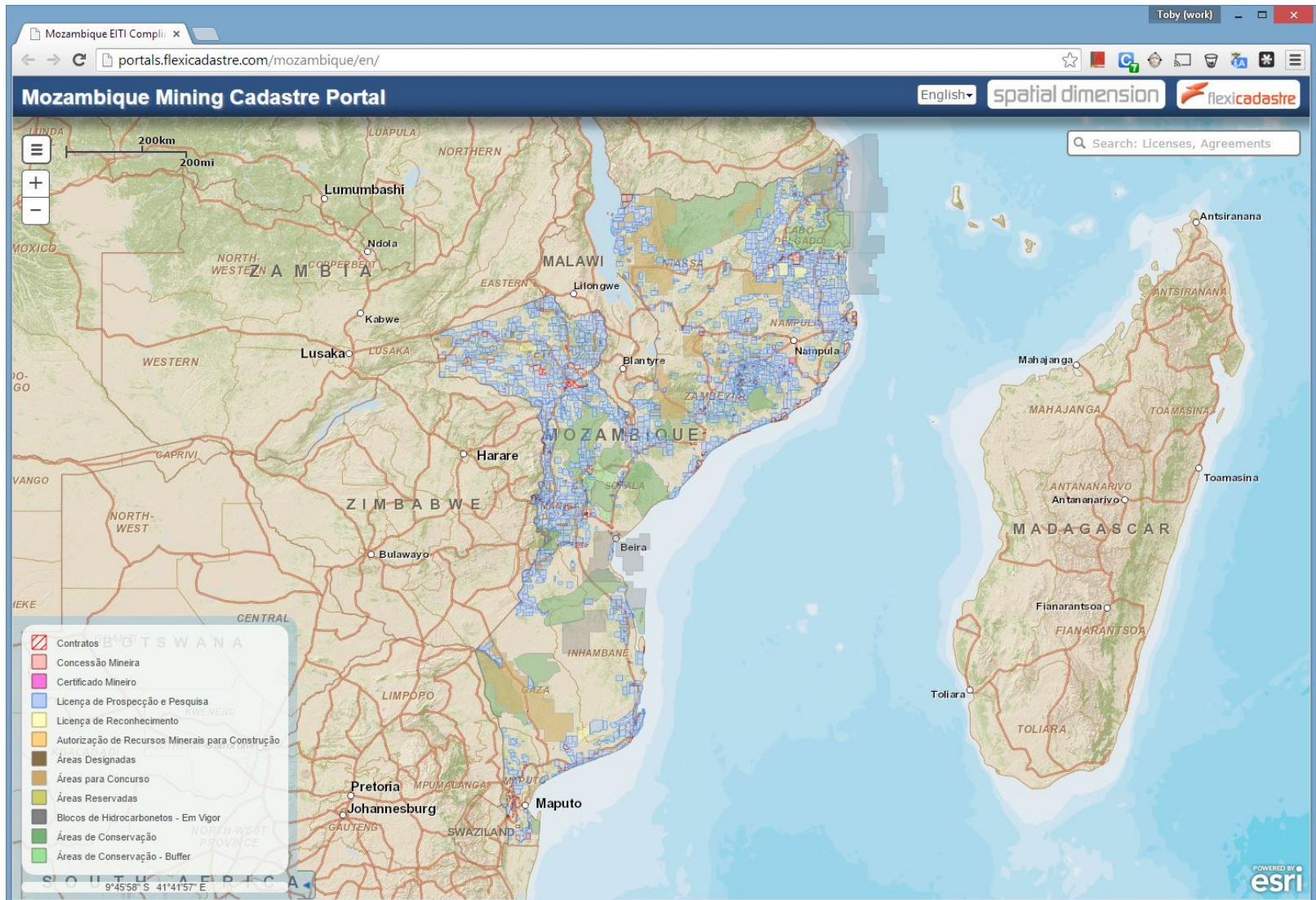
Uganda



Zambia

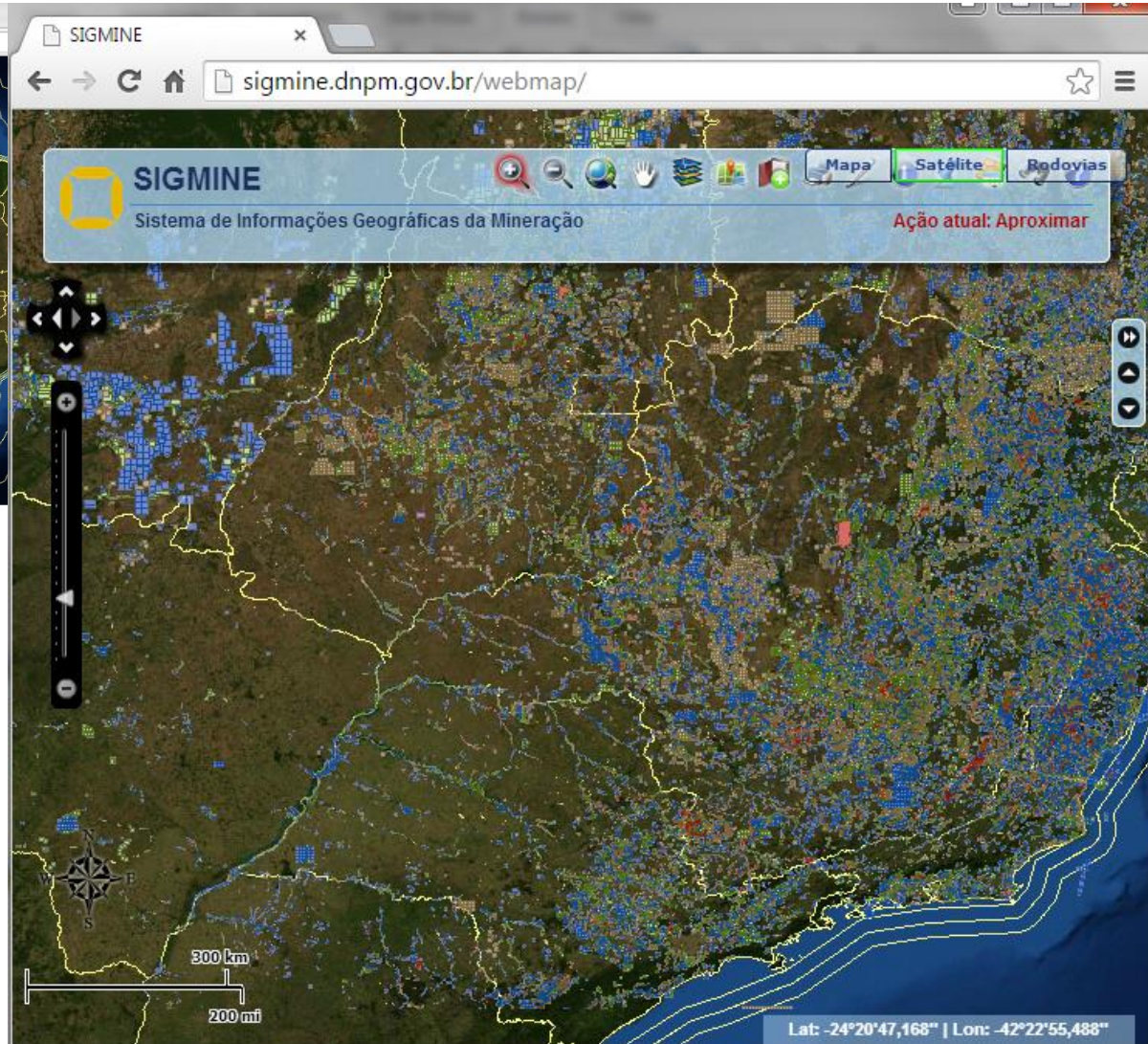
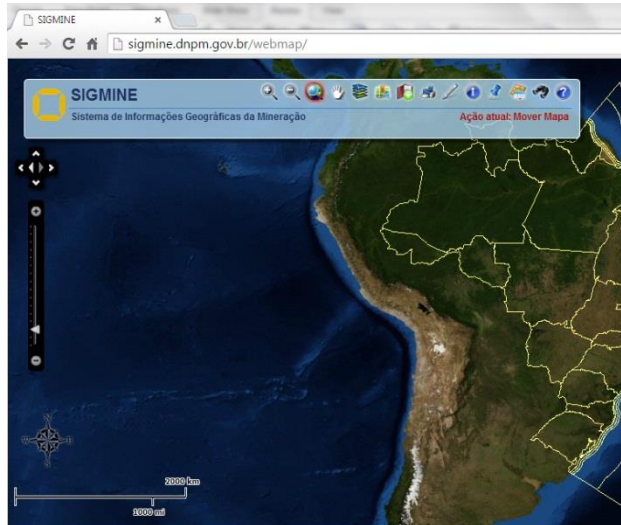


Portal Publico de Mapas



Portal Publico de Mapas

No estamos inventando! <http://sigmine.dnpm.gov.br/webmap/>



Portal Publico de Mapas

No estamos inventando!

The screenshot displays the GEOCATMIN web portal interface. The browser address bar shows the URL <http://geocatmin.ingemmet.gob.pe/geocatmin/>. The map shows the geographical outline of Peru, divided into provinces. Several provinces are highlighted in green, including Prov. Cajamarca, Prov. Gran Chimú, Prov. Otuzco, Prov. Viru, and Prov. Chucabambilla. Other provinces labeled include Prov. San Martín, Prov. San Marcos, Prov. Bolívar, Prov. Contumaza, Prov. Cajabamba, Prov. Sánchez Carrión, Prov. Pallasca, Prov. Sihuas, Prov. Corongo, Prov. Huaylas, Prov. Pataz, Prov. Tarma, Prov. Huancayo, Prov. Huancavelica, Prov. Ayacucho, Prov. Arequipa, Prov. Moquegua, Prov. Tacna, and Prov. Ica. The map also shows the coast and the Amazon basin. A scale bar at the bottom indicates 50 km. The interface includes navigation controls on the left, a search bar at the top right, and social media links for Facebook and YouTube. The text "PROYECTO ESPECIAL CHAVIMOCHIC" is visible on the map.

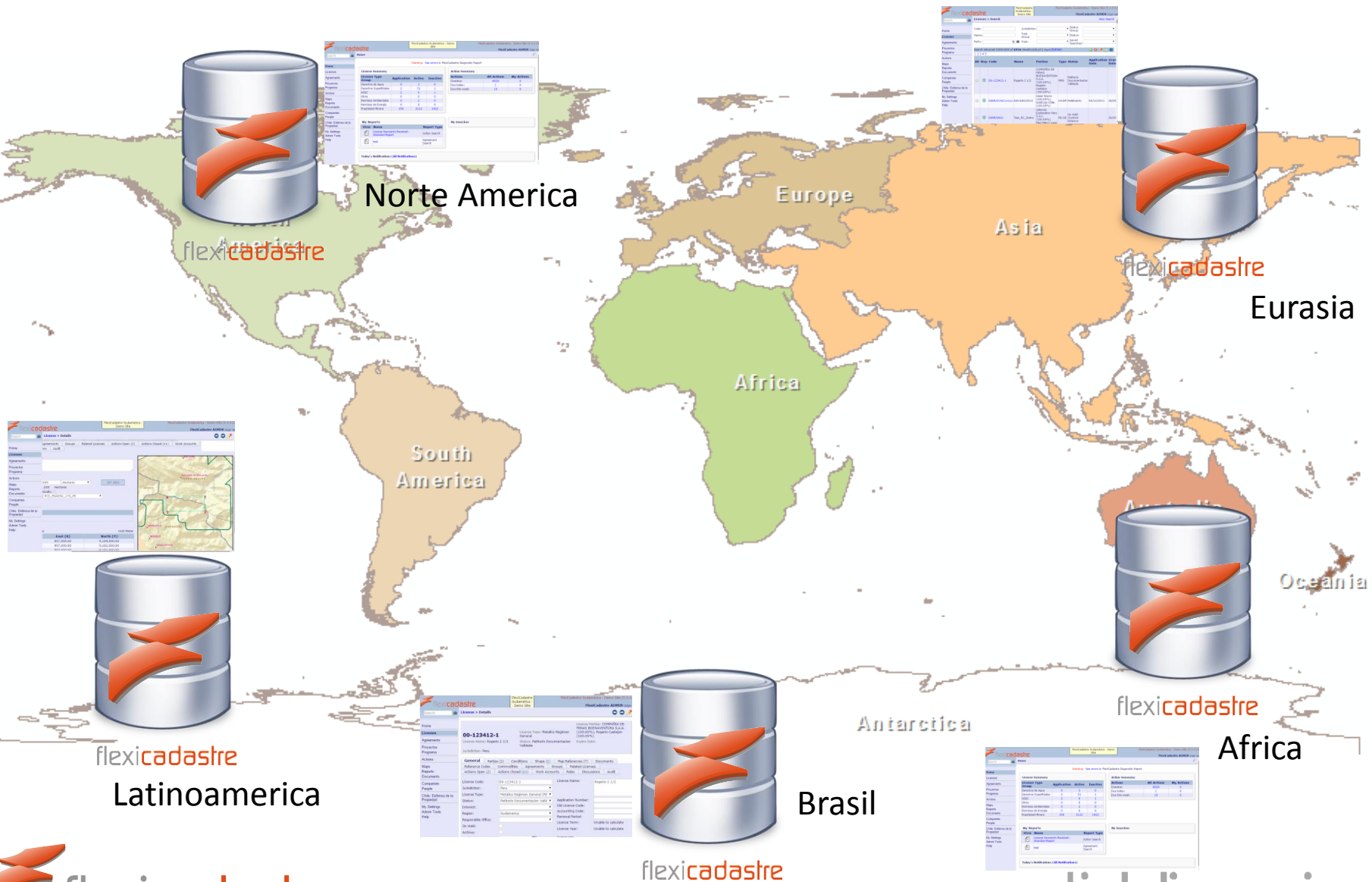
<http://geocatmin.ingemmet.gob.pe/geocatmin/>

flexica

WGS 1984 - Esc: 1:155,581 30 mi
GEO X: -77°13'39.65" Y: -8°47'33.51"

100%

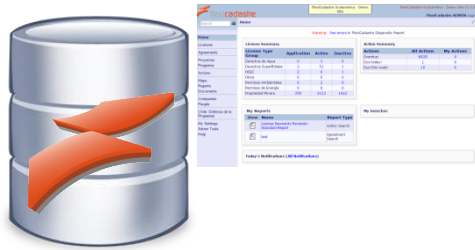
FlexiCadastre en Distintas Regiones



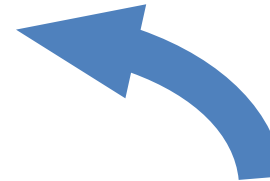
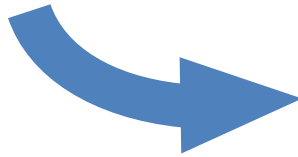
Consolidando la Informacion



“Data Mashup”



flexicadastre



Intranet
Data Espacial



Demo

The screenshot displays the Tanzania Mining Cadastre Portal interface. The browser address bar shows 'portal.mem.go.tz/map/'. The page title is 'Tanzania Mining Cadastre Portal'. The interface includes a search bar with the text 'abg', a map of Mwanza, and a list of mining licenses on the right side. A large green double-headed arrow is overlaid on the map, pointing between the license details on the left and the license list on the right.

License (130)

HQ-P20485	Application Recommended
ABG Exploration Limited (100%)	
Prospecting Licence - Metallic Minerals	
HQ-P25200	Application Recommended
ABG Exploration Limited (100%)	
Prospecting Licence - Metallic Minerals	
HQ-P25201	Application Recommended
ABG Exploration Limited (100%)	
Prospecting Licence - Metallic Minerals	
HQ-P25199	Application Recommended
ABG Exploration Limited (100%)	
Prospecting Licence - Metallic Minerals	
HQ-P25489	Application-Tender Modified
ABG Exploration Limited (100%)	
Prospecting Licence - Metallic Minerals	
HQ-P28814	Application
ABG Exploration Limited	
Prospecting Licence - Metallic Minerals	
PL 9240/2013	Active
ABG Exploration Limited (100%)	
Prospecting Licence - Metallic Minerals	
PL 9241/2013	Active
ABG Exploration Limited (100%)	
Prospecting Licence - Metallic Minerals	
PL 9063/2013	Active
ABG Exploration Limited (100%)	
Prospecting Licence - Metallic Minerals	
PL 6444/2010	Active
ABG Exploration Limited (100%)	
Prospecting Licence - Metallic Minerals	
PL 8539/2012	Active

PL 10356/2014 Active

PL 10356/2014
Mezzo Holdings Limited (100%)
Prospecting Licence - Metallic Minerals
Date Applied: 14/08/2014
Date Granted: 31/10/2014
Date Expires: 30/10/2018
Commodities: Gold
Area: 27.3 Square Kilometres



flexicadastre

Governance - Risk - Compliance



Gracias!!



*2ª LARUC - FlexiCadastre
Conferencia Regional de Usuarios Latinoamérica*

Lima, Septiembre 3 y 4, 2015



Rogelio Castejon: rogerio.castejon@spatialdimension.com



spatial dimension