

Nick Holleman | Product Manager: Portals

FEBRUARY 2019



Major Project Updates 2019

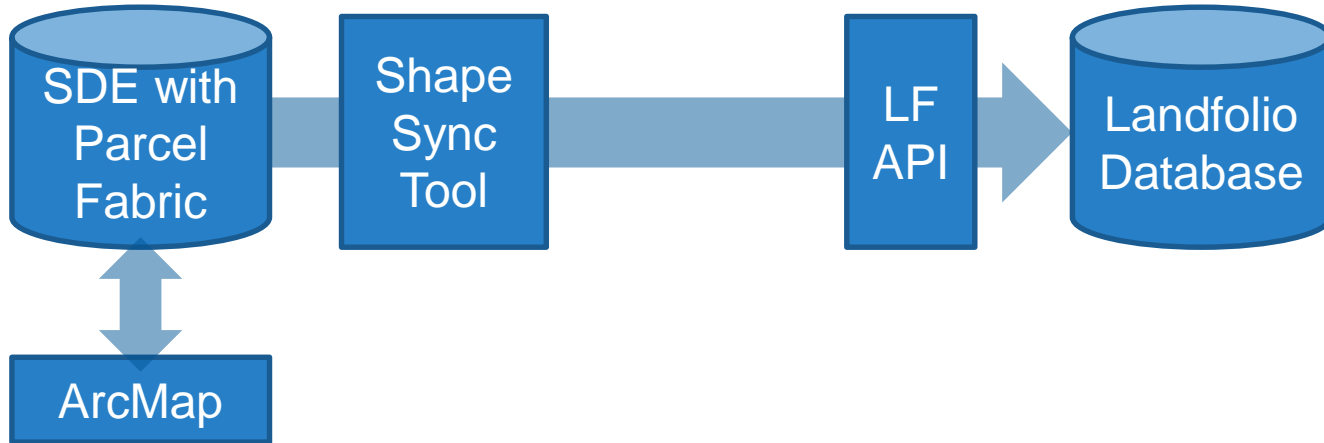
Idaho Department of Lands



- State Land Permitting Project for Lands and Waterways Division
- First major government project in the US
- Three year project, iterative approach
- Iteration 1 Go-Live currently underway!

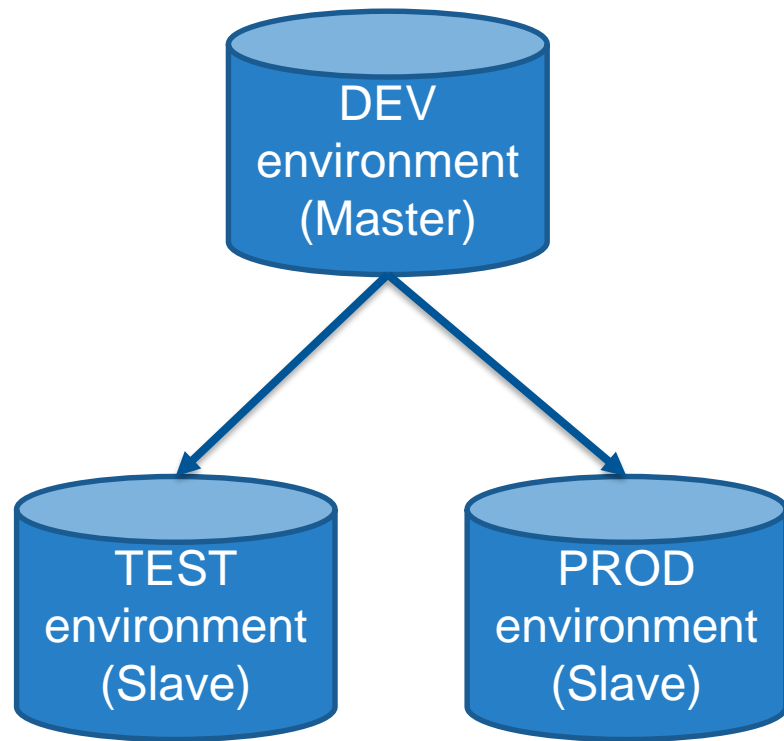
IDL Highlights - Spatial Integration

- IDL uses Esri's Parcel Fabric module to manage all spatial data – a set of tools not inherently supported by Landfolio
- We built a “Shape Sync Tool” to auto-synchronise geometries from an ArcGIS SDE into Landfolio



IDL Highlights - Configuration Sync Tool

- Handles the synchronisation of configuration settings between different environments
 - Make configuration changes in DEV environment
 - Synchronise configuration to TEST environment for UAT's
 - Synchronise configuration to PROD environment when ready for go-live



IDL Highlights - System Integrations

- Completed
 - Access Idaho – payment gateway
 - DocuSign – e-signature provider
- Underway
 - Microsoft Dynamics NAV – ERP / Financial system
 - M-Files – ECM system
- Still to come
 - LRM / Trimble Forestry Mobile



Victoria Crown Land Information Platform Improvement Project



- Major new project with Department of Environment, Land, Water and Planning for Victoria State, Australia
- Five iterations, each of 2-3 months duration
- Started in May 2018, go-live in Oct 2019

Victoria CLIP

- Crown Land equates to State Land but owned by “The Crown”
- Approximately 1/3 of the surface area of the state of Victoria
- Large parts have recognised Native Title



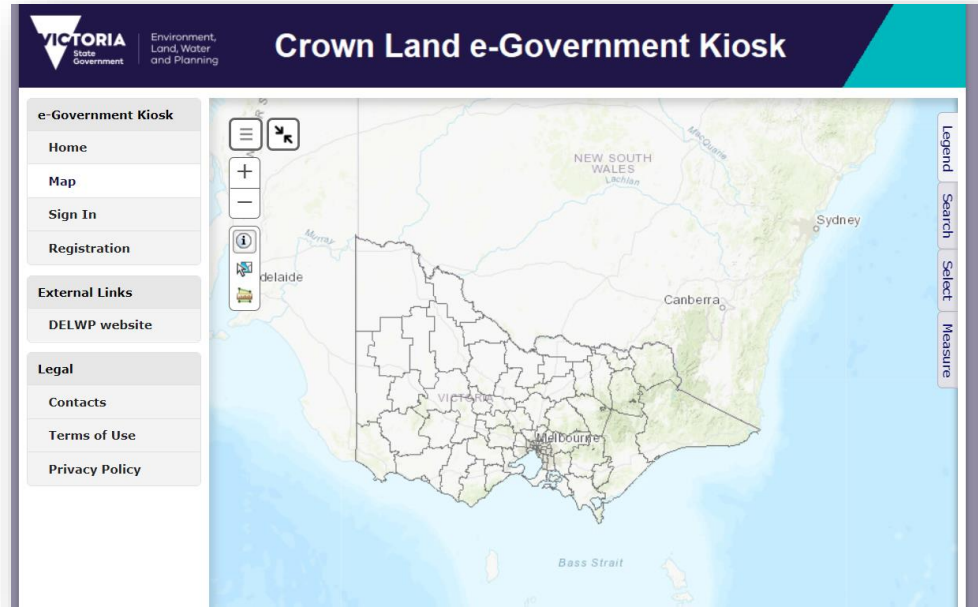
Victoria CLIP

- Crown Land is reserved for particular purposes
 - State forests and reserves
 - Coastlines and river frontage
 - Urban parks, including the MCG



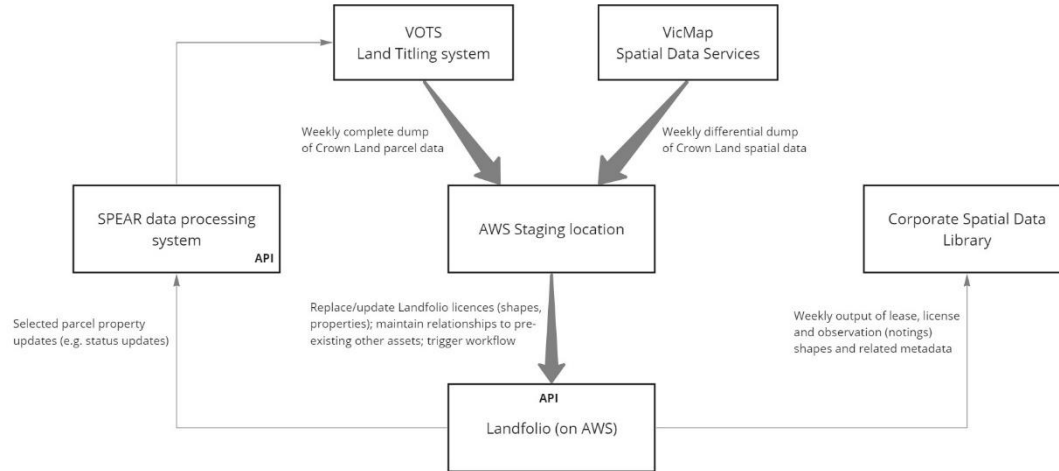
Victoria Highlights - Committees of Management

- Managed in conjunction with local Committees of Management
 - Responsible for overseeing land use
 - Make use of e-Government portal “Kiosk” to interact with DELWP
 - Submit license and lease applications on behalf of potential land users



Victoria Highlights - Spatial Integration

- Integration of Crown Land Parcel data (Spatial and related) from registry system



Victoria Highlights - System Integrations

- Sharepoint Online ECM
 - Enhanced metadata into Sharepoint
- Hard copy document management
- Oracle Financial
 - API style integration



ORACLE®

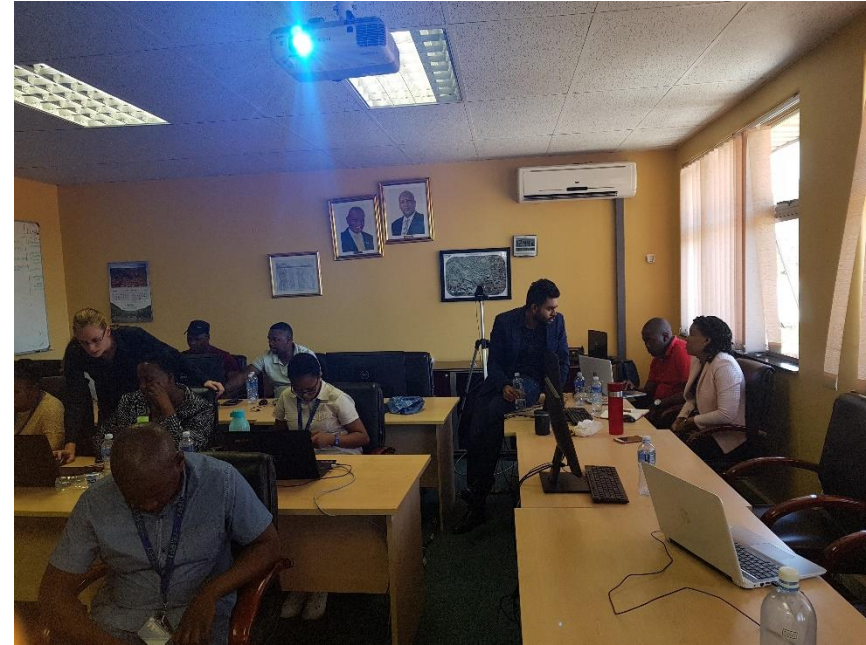
Lesotho Land Administration Authority

- Collaborative project with Esri South Africa
- Comprehensive land registry solution for the Kingdom of Lesotho
- Phase 2 completed in April 2018
- Phase 3 about to kick off in Feb 2019



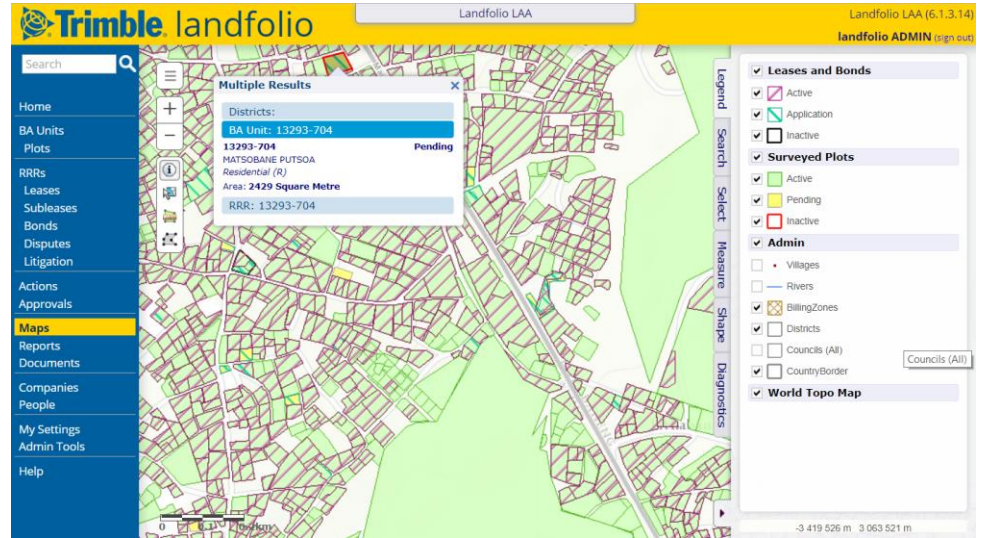
LAA Phase 2

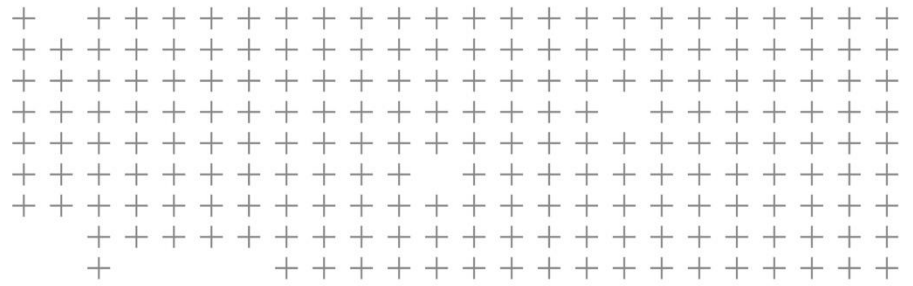
- Built on initial deployment of Esri software (Phase 1)
- Landfolio replaced SOLA (Open Source LADM compliant land administration system)
- Some highlights
 - Data migration from SOLA
 - Landfolio Back Office used by front desk to process all manner of applications
 - Billing calculations for land leasing
 - Surveys / field investigations handed over to Esri tools for processing



LAA Phase 3

- Extension of current project to include
 - Improved, seamless integration with Esri's updated cloud-based survey investigation tools
 - Integration with Sage financial system for billing and invoicing
 - Support, training and cloud hosting with AWS





 Questions?