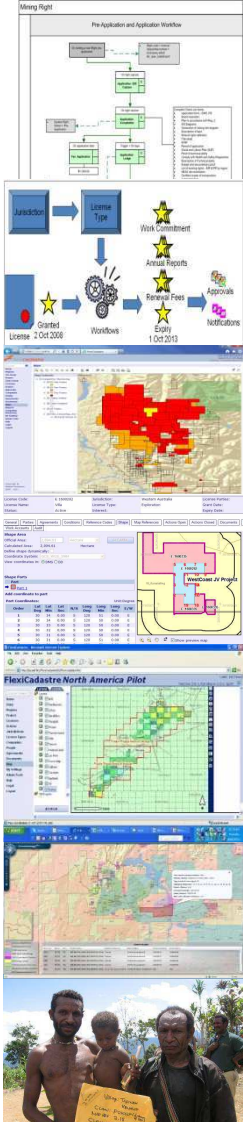


CONFIDENTIALITY

- This document has been issued to the receiving party in the strictest confidence and no parts of this or any other document in this regard may be reproduced or communicated in any form without the express prior consent of the authors.
- The receiving party shall make only such use of the information contained herein as is intended and authorized by an agreement between such receiving party and Spatial Dimension.
- The receiving party will not use or exploit the confidential or proprietary information contained herein for its own benefit or that of any third party and may make only such use of such confidential or proprietary information as is contemplated or specifically authorized by the disclosing party. The receiving party further undertakes that in the event that they do not wish to progress a relationship with Spatial Dimension they will forthwith return to the address contained herein this and any other material related hereto.



Organisational Challenges in Implementation of Government Mining Cadastre Systems: Lessons from Eastern Africa



**By John-Bosco Tindyebwa
Director, MTL Consulting**

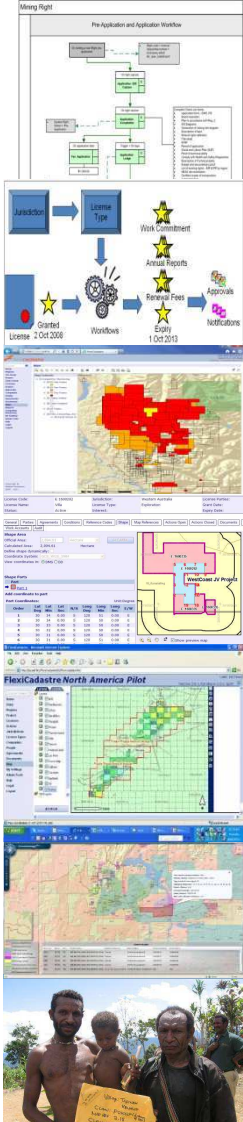
spatial dimension
AN MS GROUP BUSINESS





About MTL Consulting

- Mining Consulting company established in 1998 , based in Dar es Salaam, Tanzania, specialising in Environmental management, Permitting Procedures, ASM and Mineral Rights management
- Government clients include Tanzania, Kenya, Uganda,
- Corporate clients include major mining companies operating in the region (African Barrick Gold, AngloGold Ashanti, Petra Diamonds, etc)



spatial dimension
AN MS GROUP BUSINESS



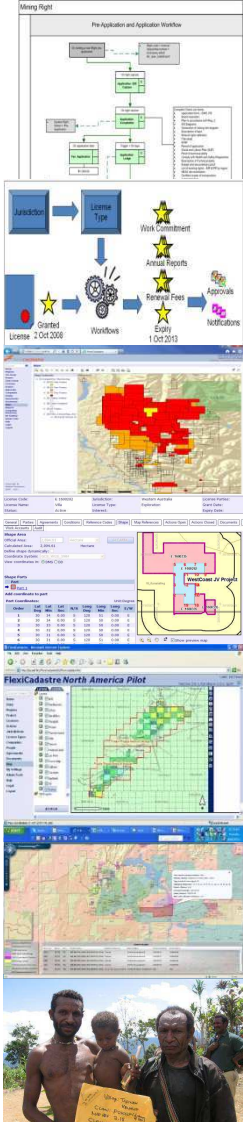


Why do Governments need Mining Cadastre Systems

Mining Cadastre Systems assist Governments in the administration of their Mining Law:

- Receiving, processing, approval and granting of mineral rights
- Collection of Government revenue
- Management of documents and reports
- Promotion of the mining industry

spatial dimension
AN MS GROUP BUSINESS

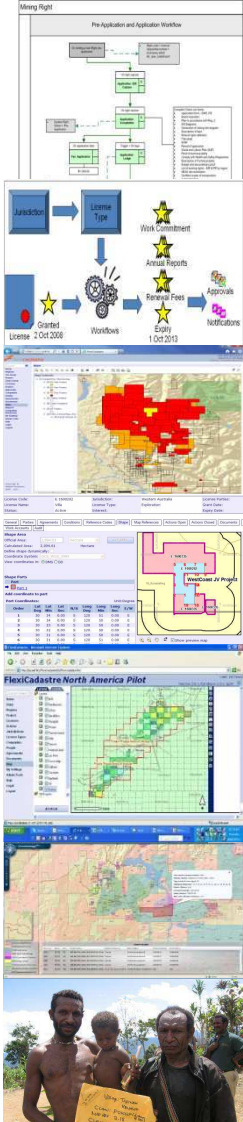




Institutional willingness to implement a MCRS and Commitment to maintain it

Willingness to accept the fundamental principles of a modern and acceptable MCRS

- Transparent and non discretionary
- Observe the principle of “first come first served”
- Security of tenure
- Security of title



spatial dimension
AN MS GROUP BUSINESS

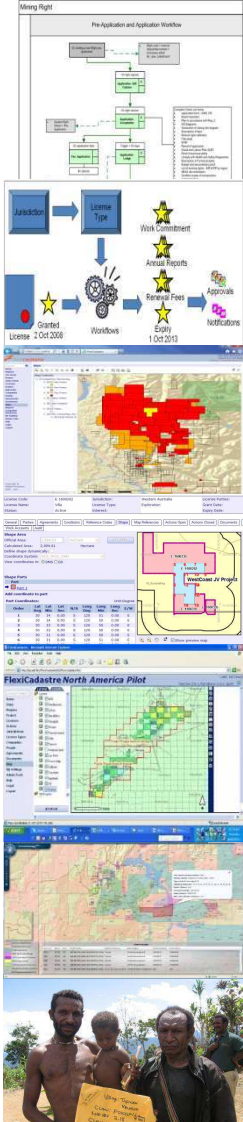




Institutional willingness to implement a MCRS and Commitment to maintain it

Commitment to the sustainability of the MCRS especially when the design and implementation were donor funded

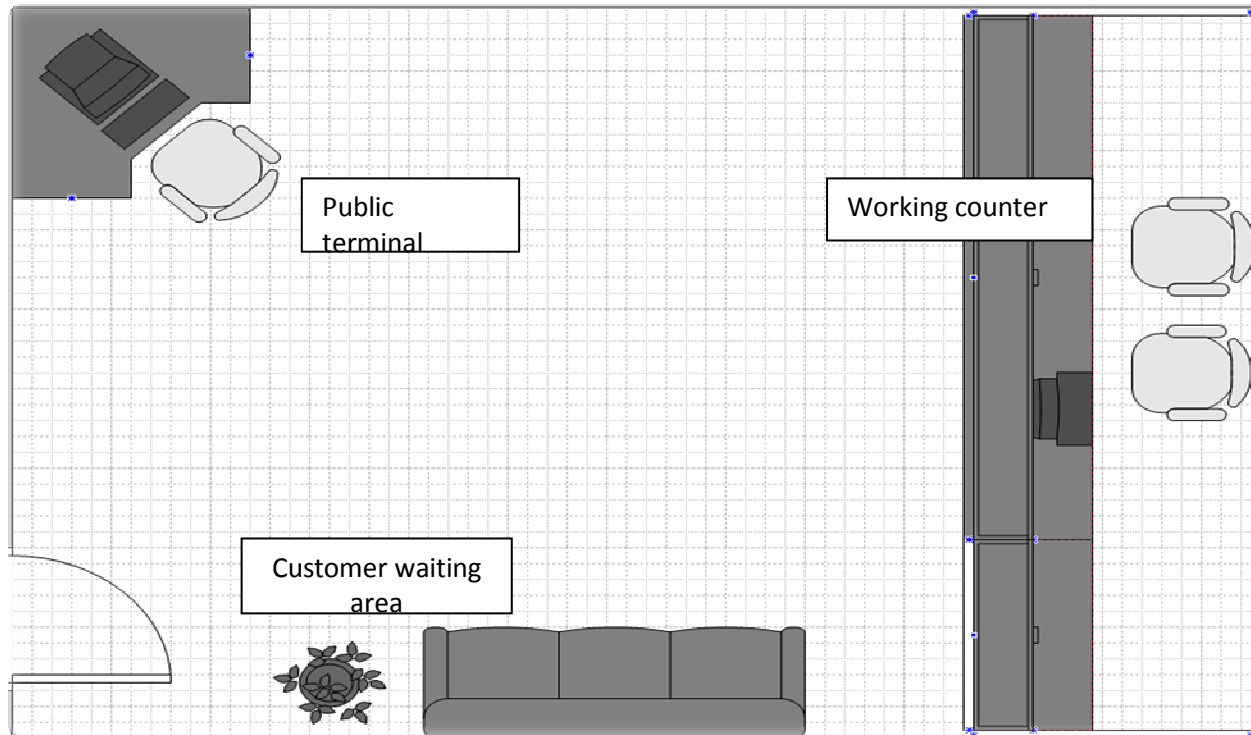
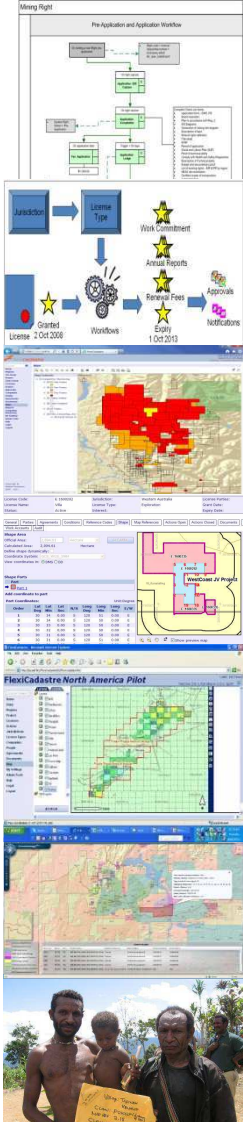
- Adequate budgetary allocations to maintain connectivity, purchase hardware and upgrade software
- Staff training and retention





Provision of proper office facilities

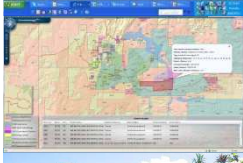
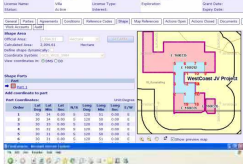
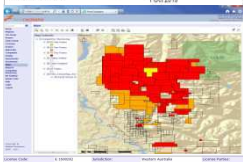
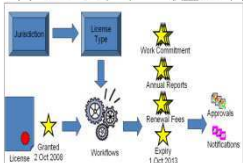
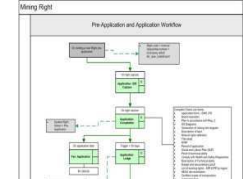
Basic layout for a Front Office





Provision of proper office facilities

Registry for mineral rights files and documents



From



To

spatial dimension
AN MS GROUP BUSINESS





Position of the Mining Cadastre Office within the Organisation structure

- Separate semi autonomous agency
- Department within the Ministry directly answerable to the Permanent Secretary
- Division under the Department answerable to the Commissioner/Director
- Unit under the Mines or Geology Divisions

