



**CIRDI**

Canadian International Resources  
and Development Institute

**SUMM**

Supporting the Ministry  
of Mines Ethiopia

**FDRE~MINISTRY OF MINES AND PETROLEUM**

# Mineral Potential and Mineral Cadastre Status

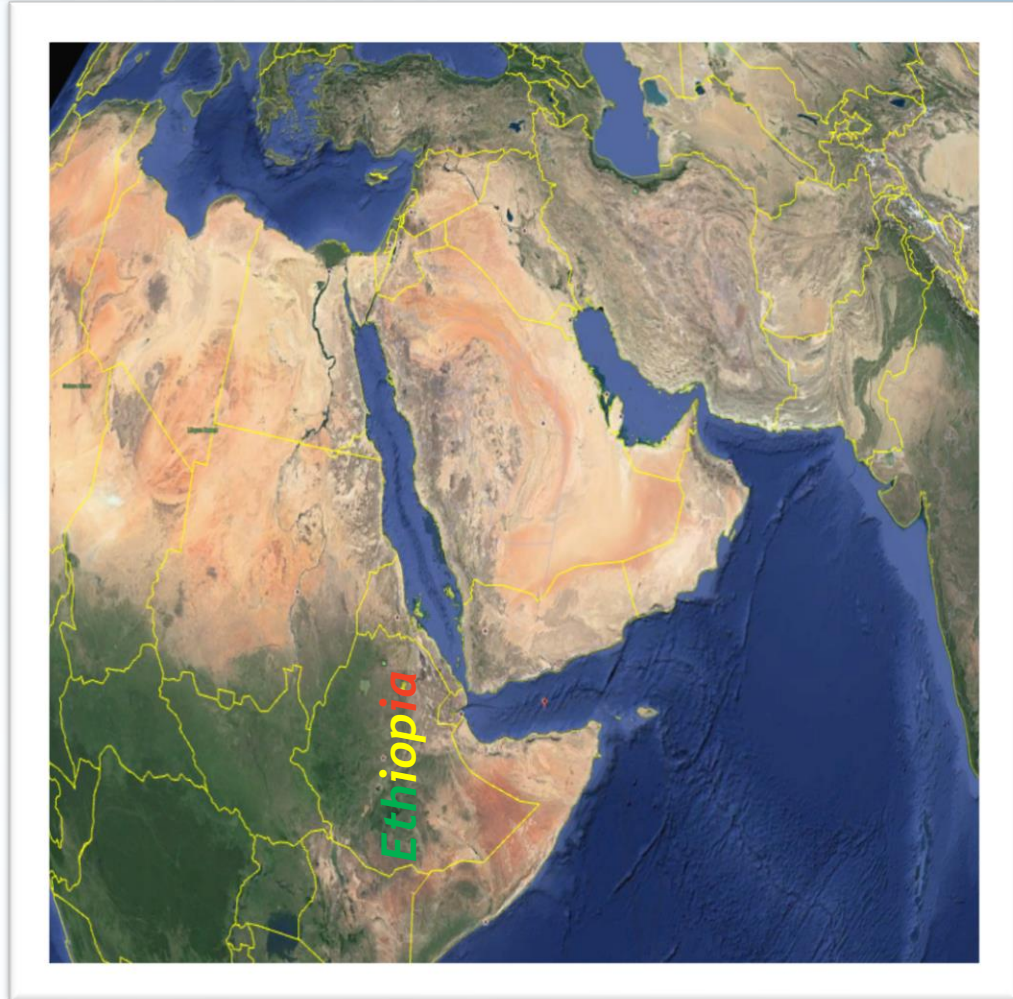
Cape Town, South Africa  
February, 2019.

# Content:

1. Back Ground
2. Institutional Framework, Duty & Responsibility
3. Types of Mineral licenses
4. The Status
5. Team Set up
6. The Benefits

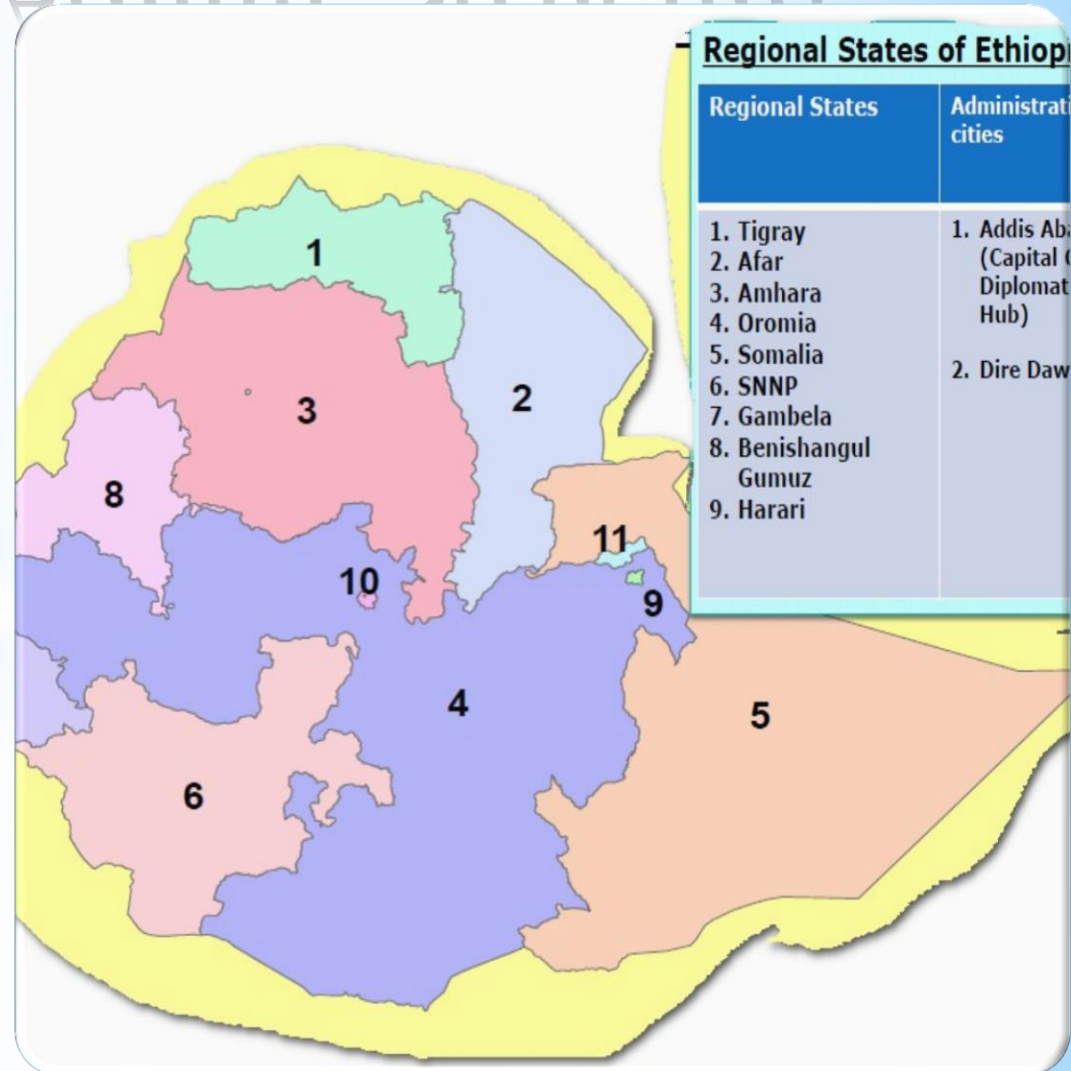
# 1. Back Ground: Ethiopia

- \* Location=East Africa.
- \* Surface area(Sq. Km)=1.14million.
  - ❖ World Rank=27th.
  - ❖ Africa rank=8th.
- \* Gate way to Africa.
- \* At the Cross road between Africa, Middle East, Asia and Europe.
- \* Population>100,000,000.
  - ❖ World Rank=13<sup>th</sup>.
  - ❖ Africa Rank=2<sup>nd</sup>.
- \* Rich resources of Cattle and Minerals.
- \* 18 major agro-ecological zones and 49 agro-ecological sub-zones.
- \* Mineral Exports: Mainly Gold, tantalite, gemstones and dimension stones like marble and granite, etc.

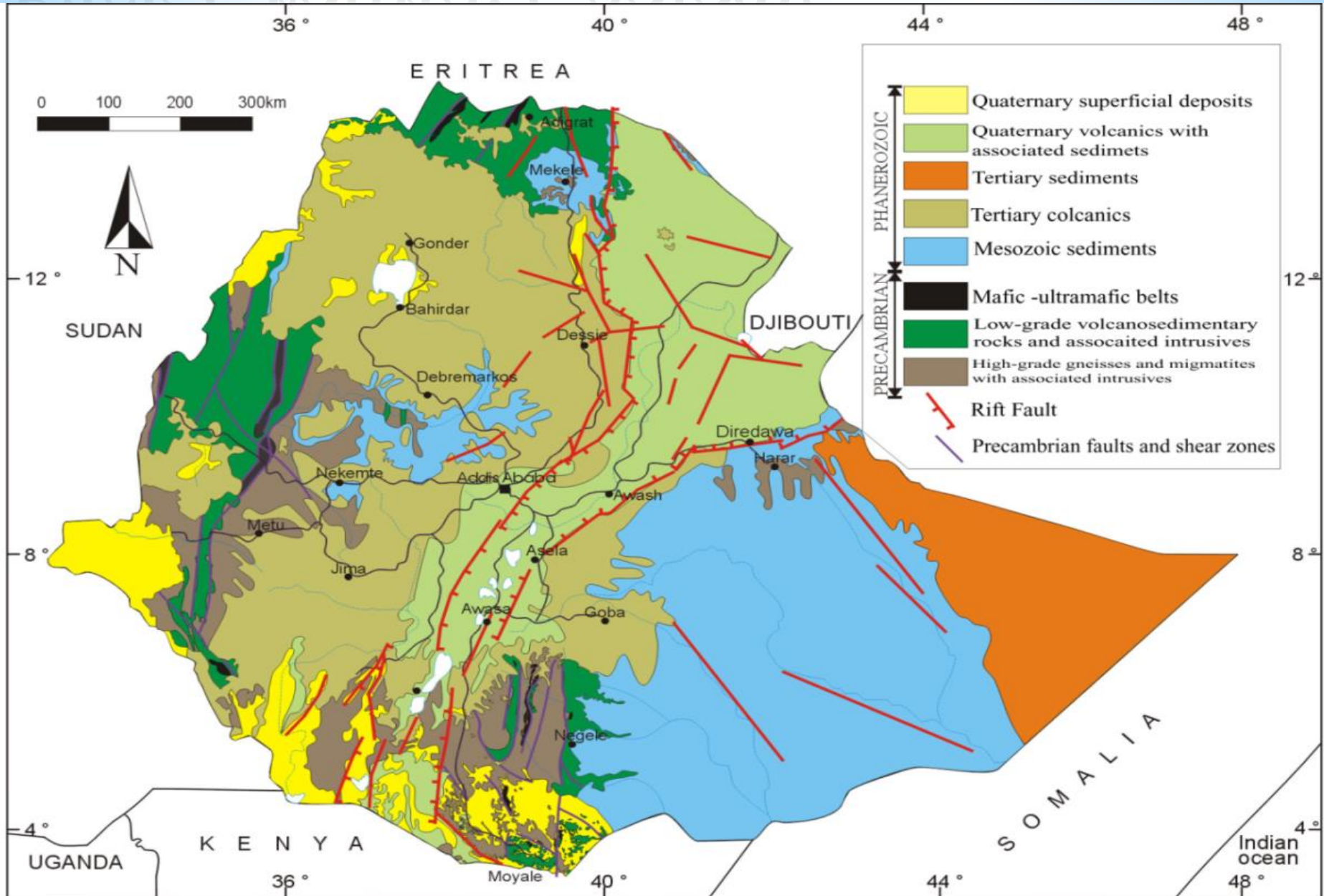


# Background: Admin. Structure...

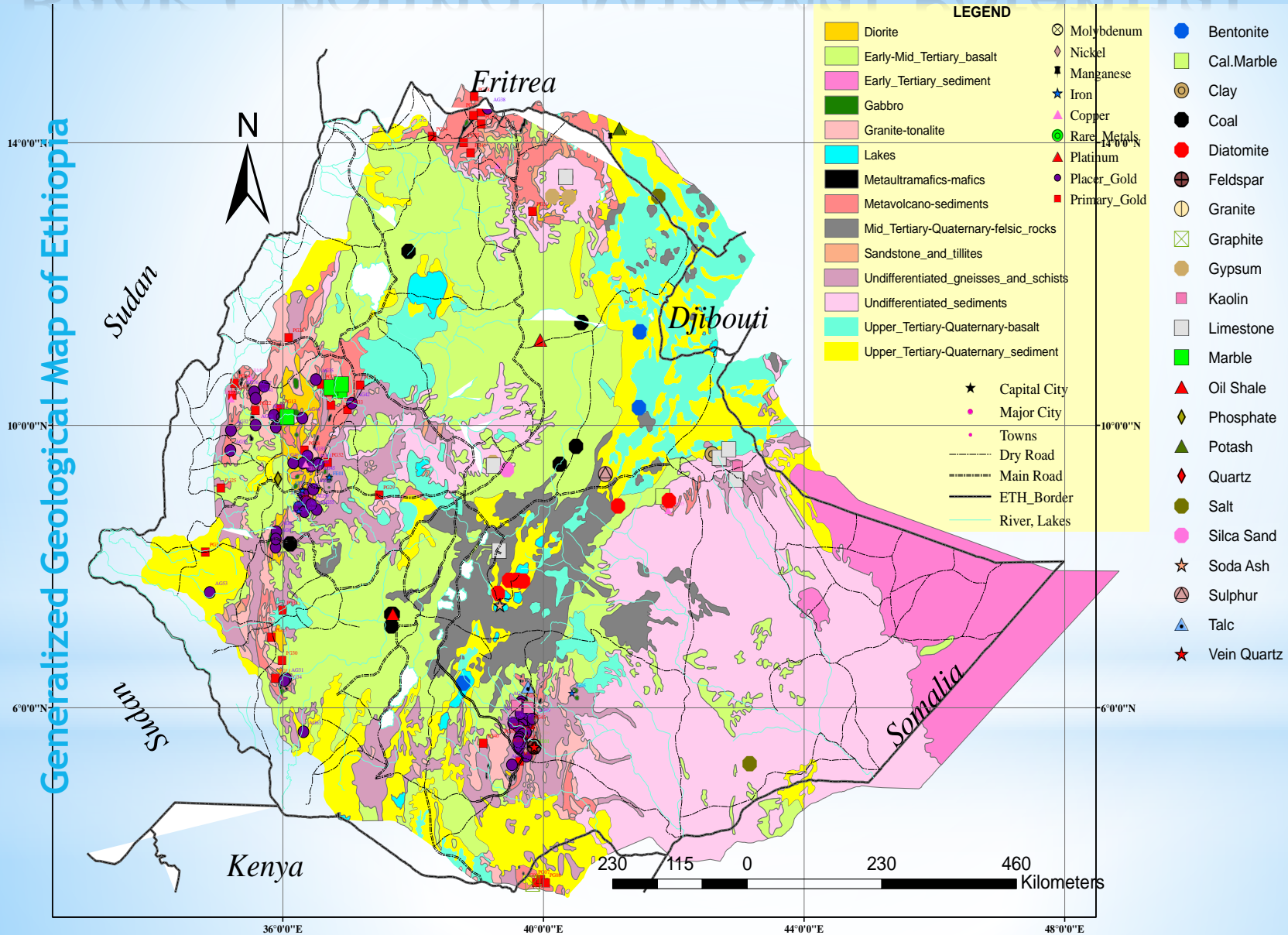
- \* Government: Federal Democratic Republic with 9 Regional States and 2 city Administrates.
- \* 3 pillars of economic growth: Stability, Investor friendly Policies and Institutional supports with higher infrastructure development growth.



# Back Ground: Geology...



# Back Ground: Mineral Potential...



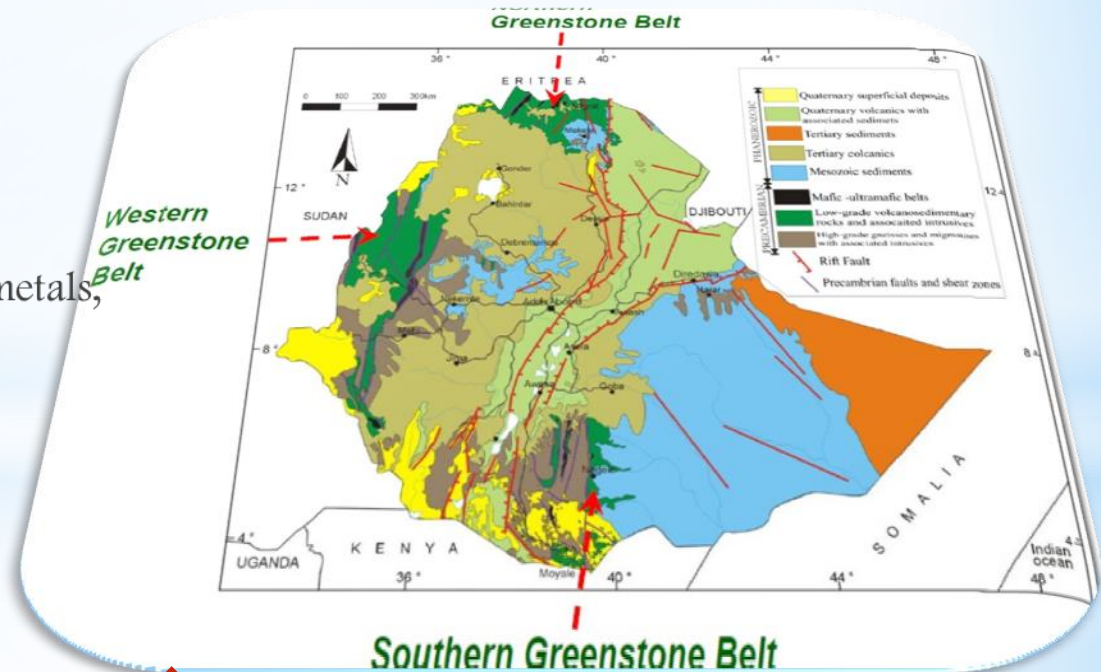
# Back Ground: Mineral Potential...

## ❖ Northern Green Stone belt:

- ✓ Primary Gold & Base metals,
- ✓ Placer Gold Occurrences.

## ❖ Western Green Stone Belt:

- ✓ Primary Gold & Base metals,
- ✓ Platinum deposit,
- ✓ Iron deposits ‘
- ✓ Placer gold deposits.



## ❖ Southern Greenstone Belt:

- ✓ Gold Deposites and occurrences.
- ✓ Nickel.
- ✓ Tantalum.
- ✓ Chromite.

## 2. Institutional Framework, Duty & Responsibility

### 2 Federal and 11 Regional/ City Administration Institutions

#### Ministry of Mines and Petroleum

- Issue reconnaissance, exploration, retention and mining license other than those to be issued by the states,

#### Geological Survey of Ethiopia

- Autonomous and accountable to the MOMP
- Responsible to carry out basic geological mapping, mineral exploration & other related geological activities and provide Services (data dissemination, drilling & lab analysis)

#### Bureaus of Mines, Energy/Water Resources of the National Regional States & City Administrations

- Issue artisanal mining licenses for nationals
- Issue for domestic investors:
  - ❖ reconnaissance, Exploration and retention licensees with respect to construction and industrial minerals,
  - ❖ small scale mining licenses for industrial minerals,
  - ❖ Small and large scale mining licenses for construction minerals,
  - ❖ Special small scale mining license



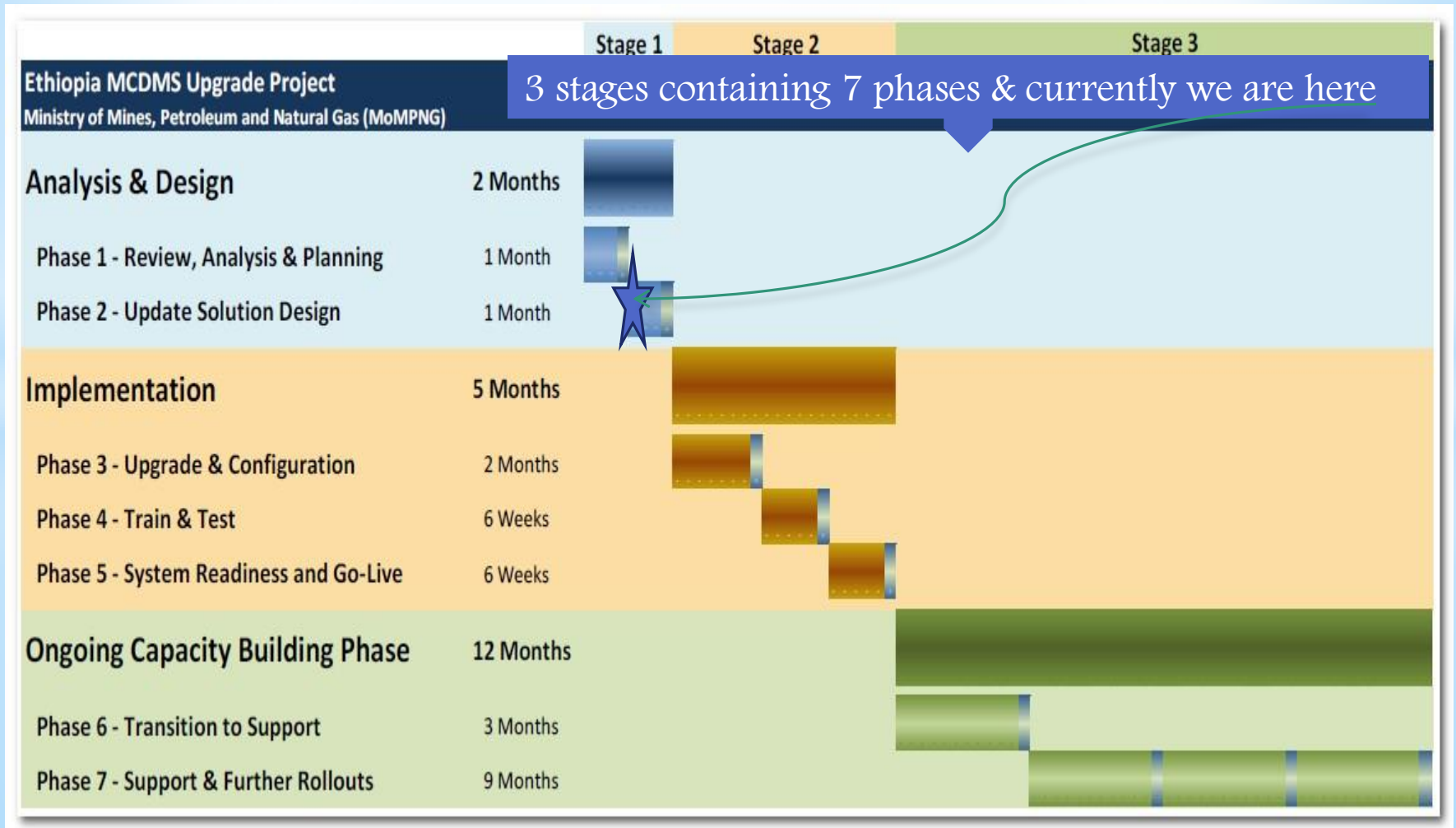
# 3. Types of Mineral licenses

## Types of licenses (7 types) for Hard Minerals

License Type	Duration	Remark	
Reconnaissance	18 Months	Non-renewable & non-exclusive	
Exploration	• Up to 10 years (3 years initial, 2 renewals of 1 year each & 5 extensions of 1 year each)	Exclusive Mineral Right	
Retention	Up to 6 years & exclusive (3 years initial & one time renewal for 3 years)	<ul style="list-style-type: none"> <li>• Upon discovery of mineral deposits of economic significance</li> <li>• Existence of adverse market conditions, or</li> <li>• Unavailability of Processing technology</li> </ul>	
Mining	Large Scale	20 years initial & exclusive (renewal of 10 years)	Upon demonstration of continued economic viability of mining the deposit
	Small Scale	10 years initial & exclusive (renewal of 5 years)	
	Special Small Scale	<ul style="list-style-type: none"> <li>• May not exceed 10 years</li> <li>• Renewal for 5 years</li> </ul>	To upgrade Artisanal mining operation using machinery & labor Does not require feasibility study
	Artisanal	Maximum of 2 years & Exclusive not renewable	Reserved for nationals & revocable if the deposit required advanced exploration and

# 4. The Status: Mineral Cadastre and portal project

3 major stages containing 7 phases of progressive development and implementation:



# The Status...

---

Unique natures:

Decentralized Cadaster system

---

Data sharing with the GSE

---

An interactive project  
NOT A TURN KEY project

---

# 5. Team Set up & People involved.

3 layers:

1<sup>st</sup> Level: Advanced Managers/Administrators



2<sup>nd</sup> Level: Core Team/Trainers



3<sup>rd</sup> Level: Operator Team

# 6. The Benefits.

---

The benefits hoped to be achieved through implementing land folio and the mining cadaster portal

1. Effective and Sustainable mineral rights administration

---

2. Good governance: E-Government

---

3. Facilitating activities and providing service to business, and enhancing quality of life

---

አዲስ አበባ

*I Thank You*

Sulfur Volcanic Landscape, Dallol, Danakil Desert, Ethiopia