



CÔTE D'IVOIRE MINING CADASTRE'S EXPERIENCE WITH LANDFOLIO

Mégnonron SILUE
Director of Mining Cadastre



CONTENT

1

**Organization of the Ministry of Mines,
Petroleum and Energy**

2

Role of the Mining Cadastre

3

**History of the relationship between Côte
d'Ivoire and Spatial Dimension**

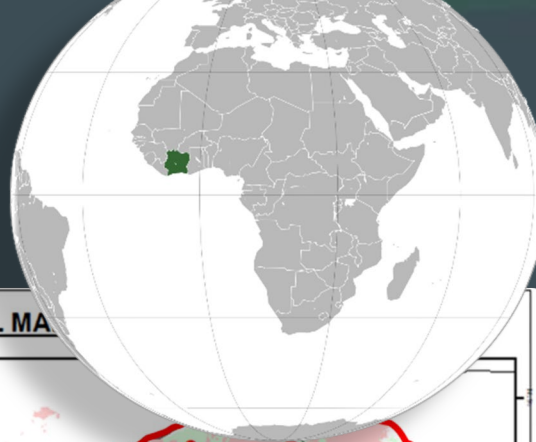
4

**The Success of the Mining Cadastre using
LANDFOLIO**

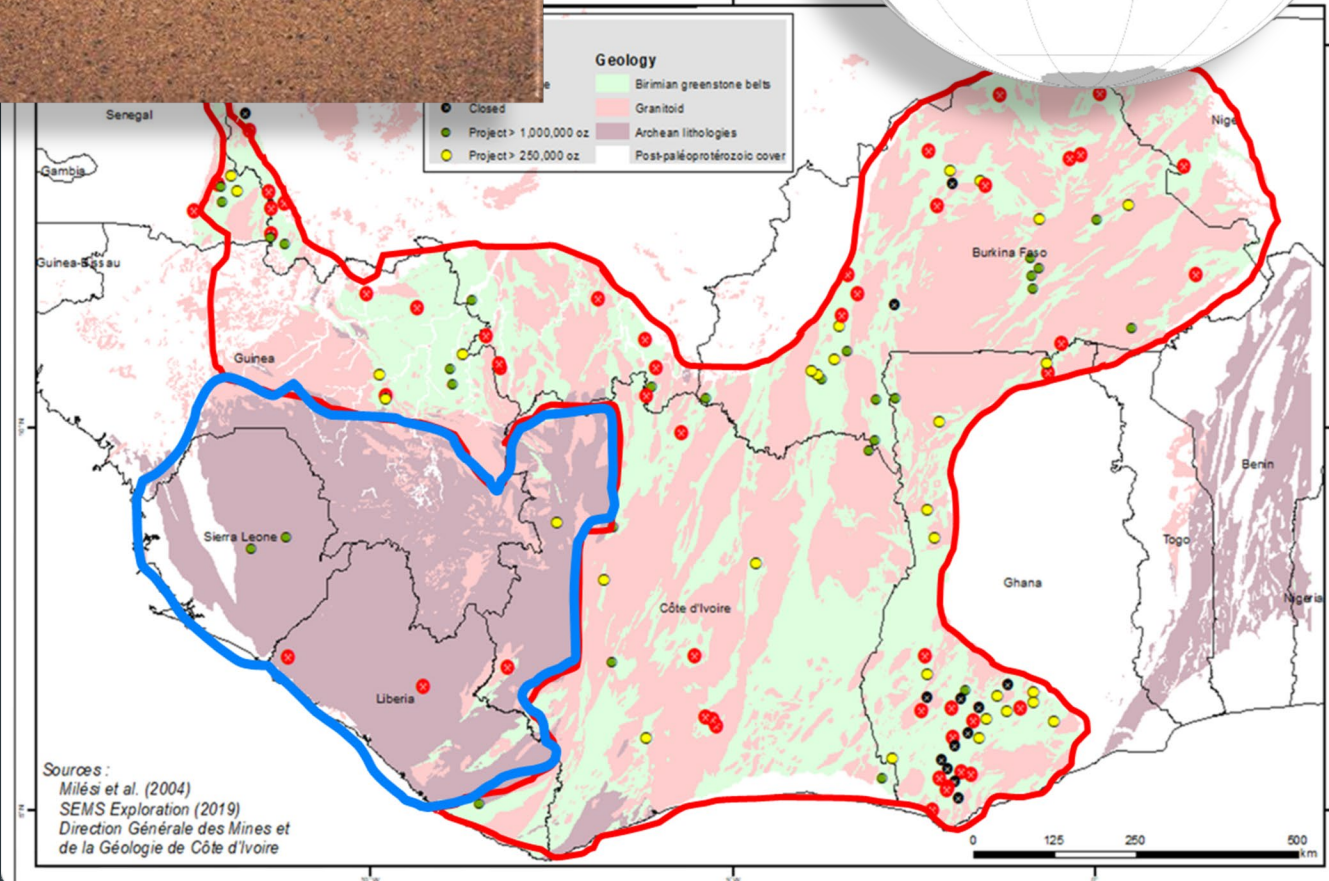
5

The e-Gov Portal Project

Introduction



AFRICA GEOLOGICAL MA



Côte d'Ivoire, a Country in West Africa, has a great geological potential indicated by:

- 35% of the Birimian lands of West Africa, rich in gold and other commodities;
- 18,6% of Archean rocks rich in base metals
- More than 50 commodities identified in the country

TO THIS DAY, THE DEVELOPMENT OF THIS POTENTIAL PROVIDES

Introduction



13 gold operating mines



04 manganese operating mines



01 bauxite operating mines



01 lateritic nickel operating mine



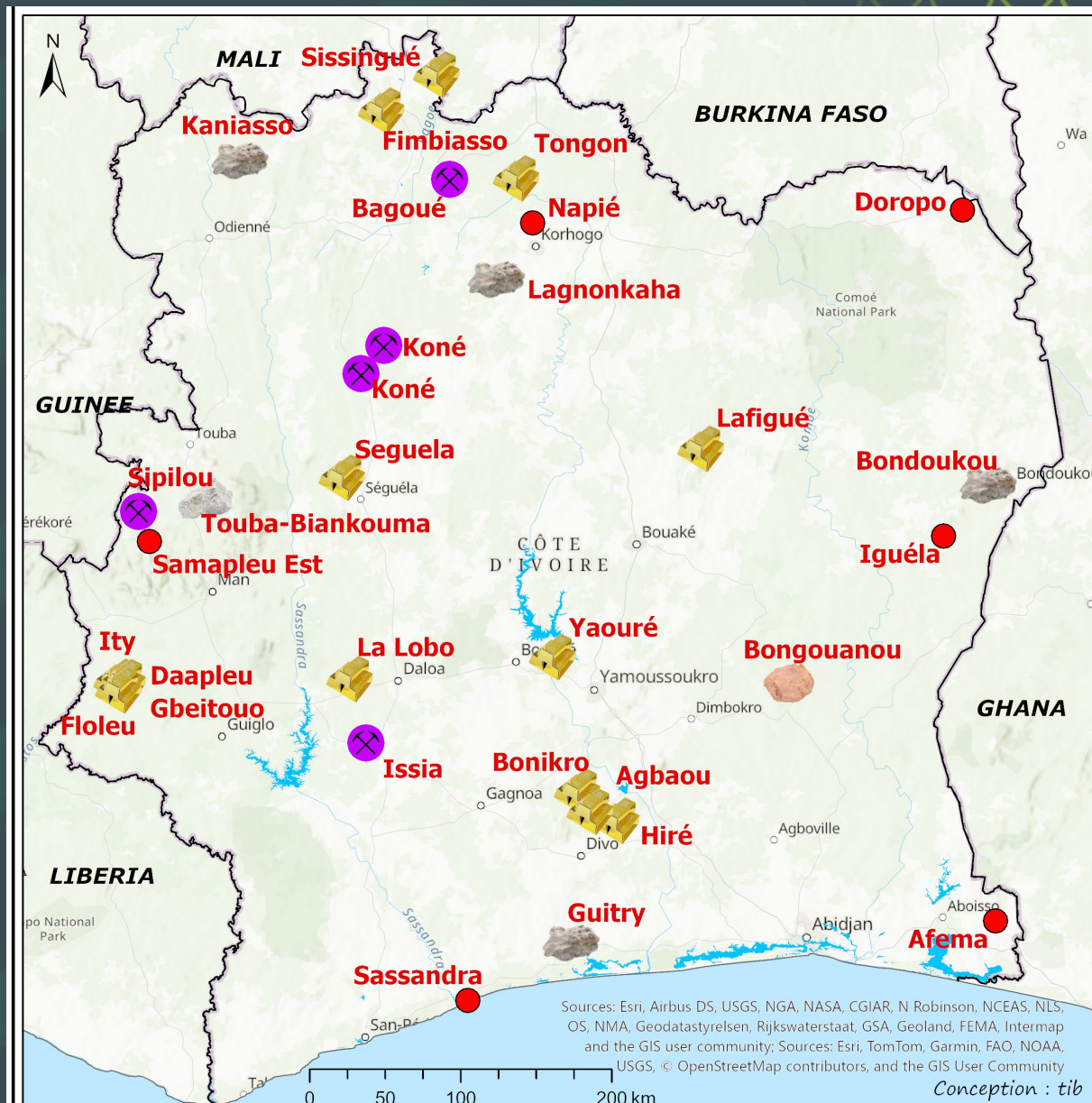
03 mines in construction



06 advanced mining projects



Spatial
Dimension



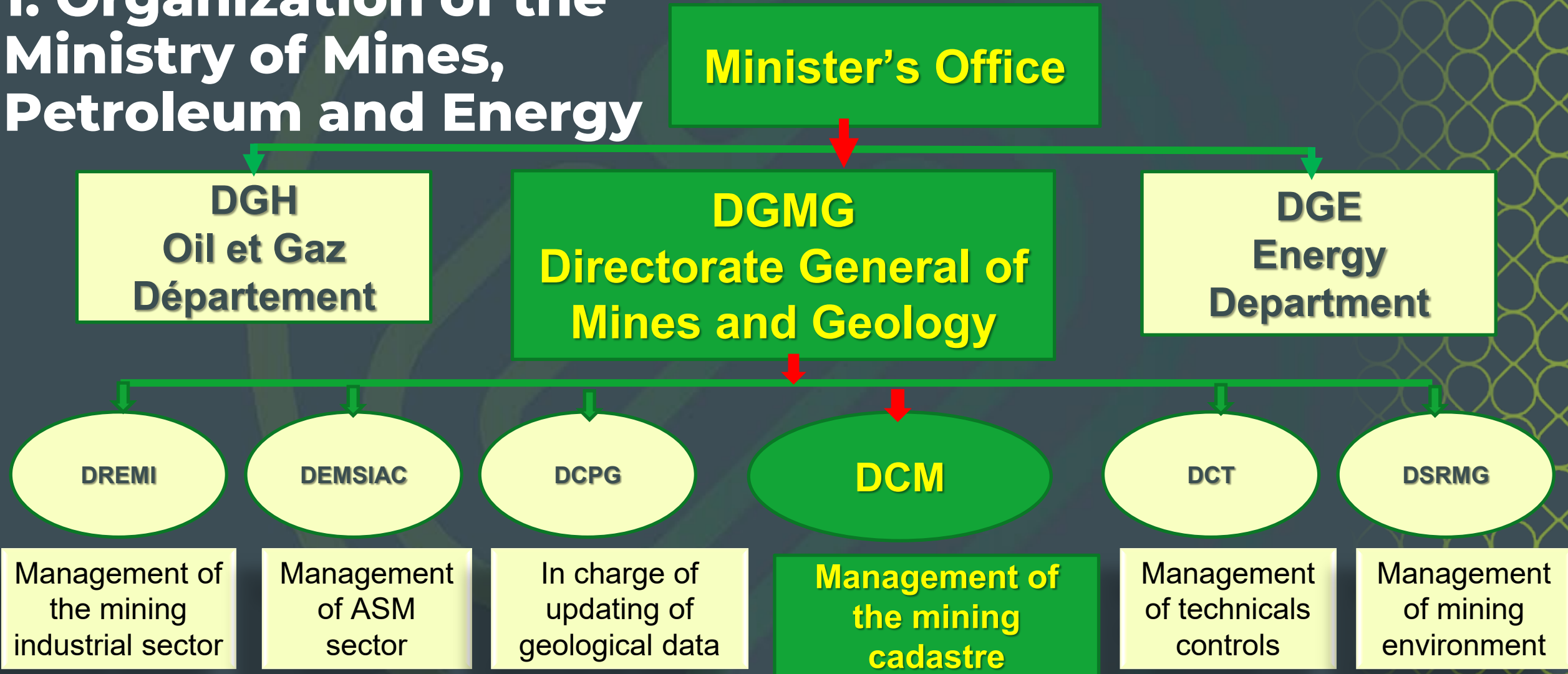


Introduction

Favourable socio-economic environment

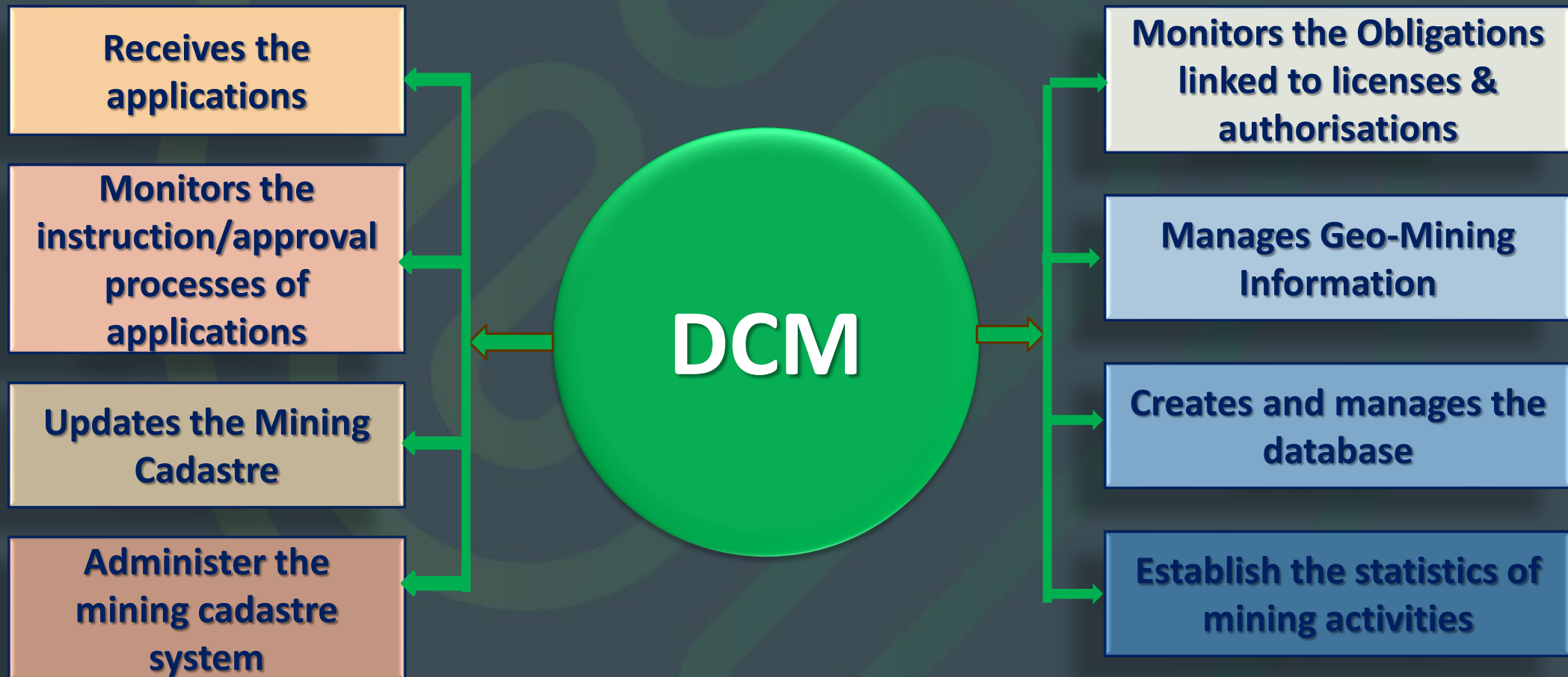
- Political stability ;
- Security ensured throughout the territory ;
- Modern infrastructures ;
- Availability of electrical energy ;
- Quality human resources ;
- Sustained economic growth
- Welcoming population ;
- Very attractive mining code

1. Organization of the Ministry of Mines, Petroleum and Energy

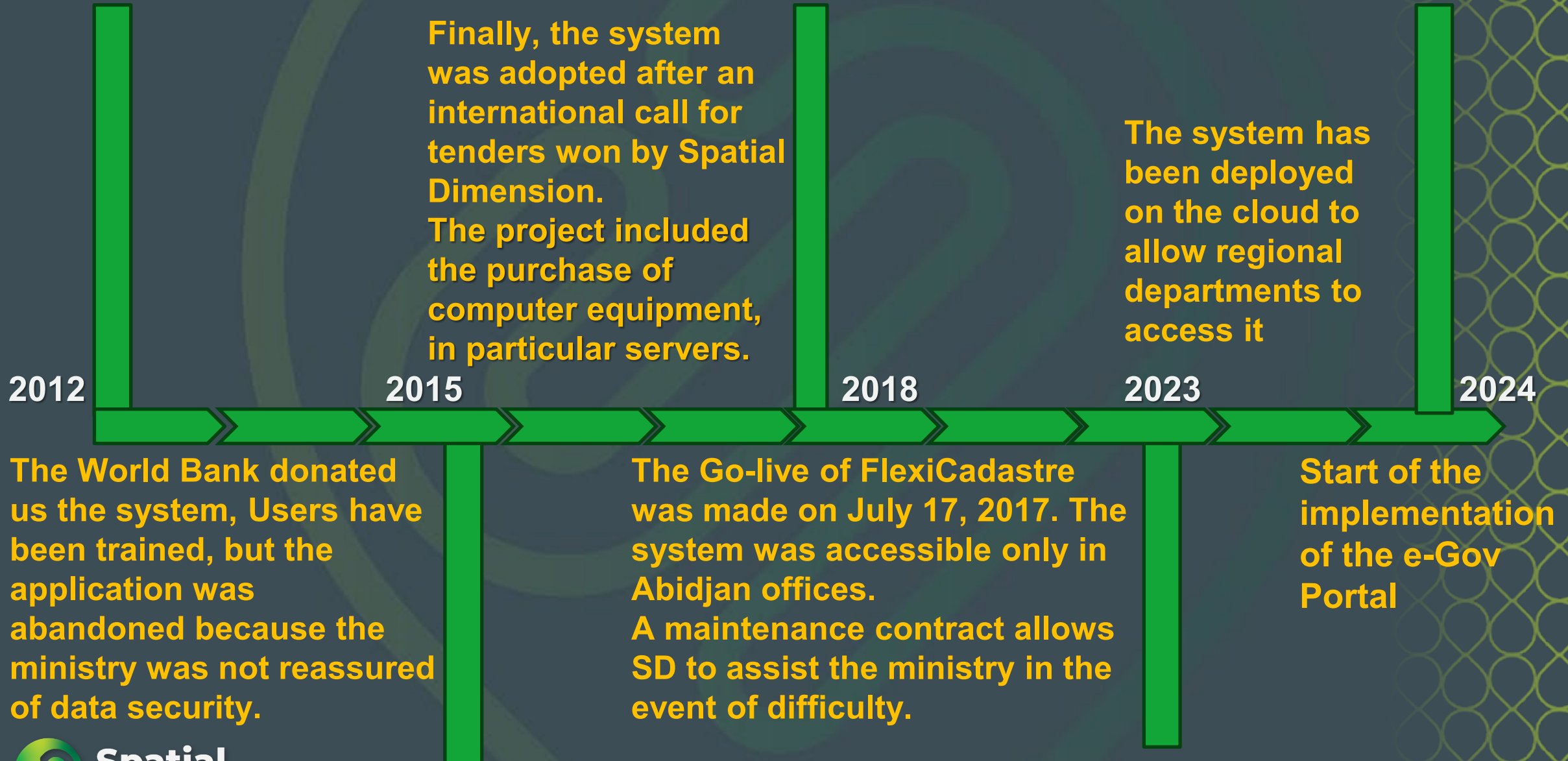


We have 30 regional directions which are extensions of the DGMG on the expansion of the territory

2. Role of the Mining Cadastre



3. History of the Côte d'Ivoire – SD relationship



4. The success of the Mining Cadastre using LANDFOLIO

- Reduction in processing times for applications**
- Increase the transparency in space management :
success of public portals with users**
- Increased tax collection**
- Facilitating data acquisition for reports**
- Facilitating the exchange of correspondence
with companies**
- Correction of all non-regulatory overlaps between
areas**
- Electronic archiving reduces the loss of
documents**



SOME EVIDENCE OF LANDFOLIO'S SUCCESS

4. The success of the Mining Cadastre using LANDFOLIO

	2014	2018	2024
Research Permit	140	178	203
Operating mining license	12	17	29
ASM	0	200	530

- The surface royalties recovery rate increased from around 65% in 2015 to over 95% in 2024

Current statistics of the mining cadastre

	AP	PR	PE	AEA	AESI	AECA	AECIC	AECIM	AXCA	AXCIC	AXCIM	Total
Applications	0	434	11	1547	2597	44	99	97	29	17	41	4916
Valids	0	124	24	169	253	1	72	33	0	6	1	683
current renewal	0	74	5	53	56	1	6	24	0	12	4	235
Inactive	6	712	3	1887	4004	24	149	67	10	58	20	6940
TOTAL	6	1344	43	3656	6910	70	326	221	39	93	66	12774

5. The e-Government portal project

OBJECTIVES OF THE PROJECT

- ❖ **Increase transparency:** Reduce contact between Users and State Agents to Keep any possibility of corruption
- ❖ **Facilitate user access to the services of the Mines Administration :** users can operate at any time and wherever they are
- ❖ **Increase the performance of the Administration:** Focus efforts of the Administration on more specific tasks
- ❖ **Reduce** the use of physical paper

5. The e-Government portal project

CURRENT STATE OF THE PROJECT

In September 2024, SD made a diagnostic mission in Abidjan to analyze the current system and to collect the aspirations of Côte d'Ivoire ;

Another mission took place in November 2024 to design the portal.

Now, we are cleaning data.

FUTURE STEPS OF THE PROJECT

- ❖ **Workflows validations**
- ❖ **Portal configuration;**
- ❖ **Back-office data migration to the new portal**
- ❖ **Training of users of the new portal**
- ❖ **Go Live**



Conclusion

Since 2018, the Mining Cadastre of Côte d'Ivoire has been modernized thanks to Landfolio.

The e-Government portal project will make it possible to dematerialize the process and give added value to the performance of the mining administration.



**Thank you for
your kind
attention**